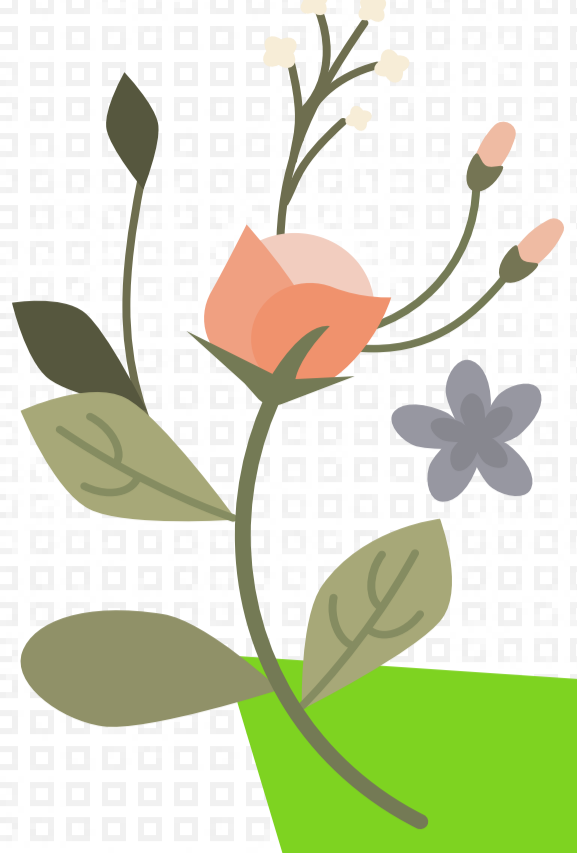


Equine Pasture Management Tips for May



1. Continue Rotational Grazing

Move horses from pastures that are grazed no less than 4 inches in height to rested pastures that are at least 6 inches in height.

6 in.



Avoid being locked into a pasture sequence if grass height of pasture indicates a different order of rotation.

2. Use Loafing Lots if Pastures Need Rest

Move horses onto the loafing lot/heavy use area and feed hay if pastures are too wet or short for grazing.



3. Check Eroded Areas

Evaluate soil erosion in loafing lot/heavy use area and other heavy use areas (gates, feeders, run-in sheds, waterers). Your local soil conservation district can assist with soil erosion control measures.



4. Walk Your Pastures

Inspect pastures at least weekly to monitor forage growth, weed encroachment, and to inspect fencing and grazing horses. Control existing weeds with herbicide, pulling, and/or frequent mowing to ~ 4 inches. Call your county extension office for help with weed identification.

