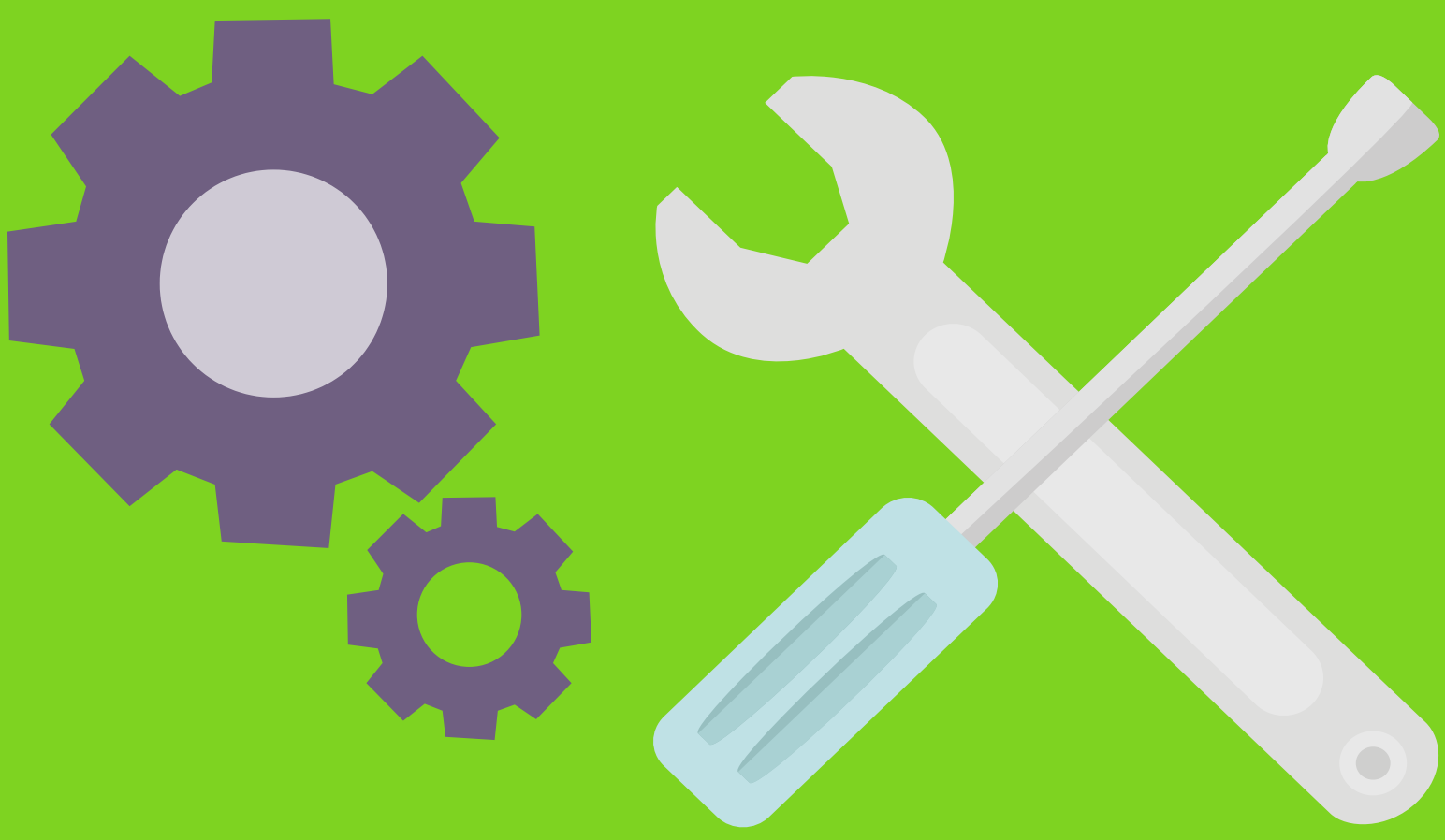


# Equine Pasture Management Tips for December



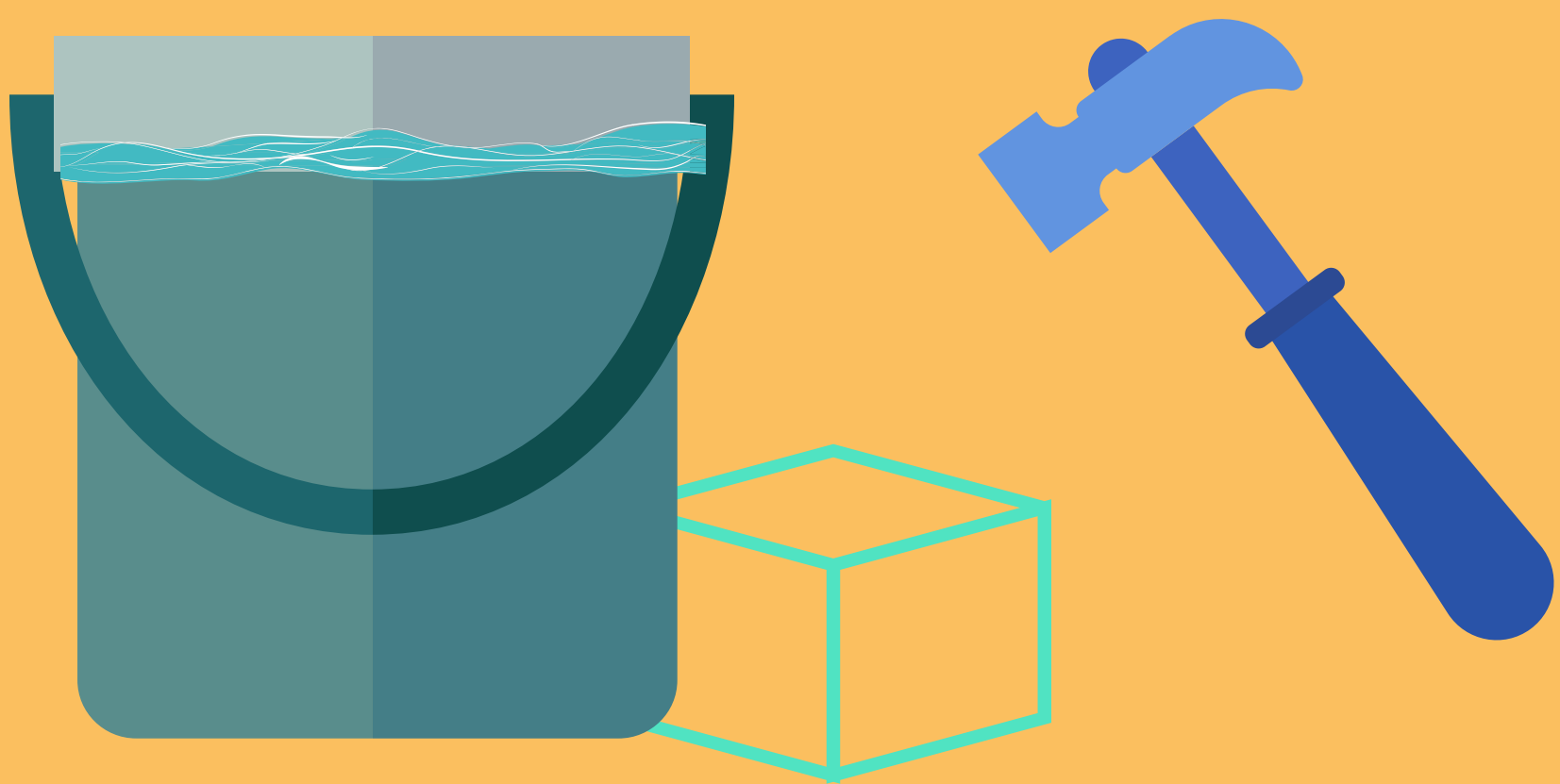
## 1. Perform Equipment Maintenance



Proper maintenance now means your equipment will be ready to go in spring.

## 2. Check Water Daily

Break ice and check heaters to make sure horses have access to water.



## 3. Check Body Condition Score

Assess weight and body condition score on a monthly basis. Make feed changes as necessary to keep weight appropriate through winter.



UNIVERSITY OF  
MARYLAND  
EXTENSION

Excerpted from Pasture Management for All Seasons  
Learn more:  
<https://extension.umd.edu/horses/resources/publications>



This institution is an equal opportunity provider.