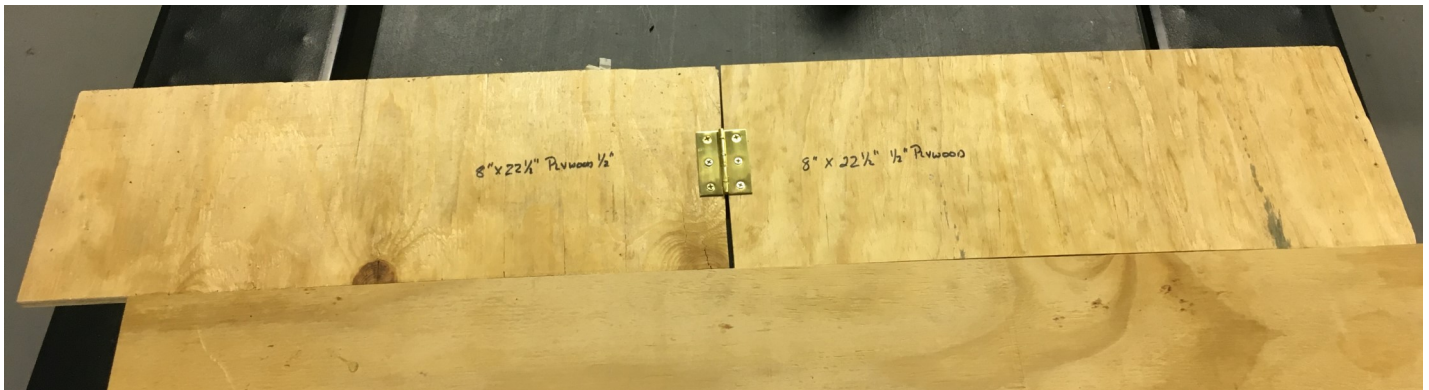
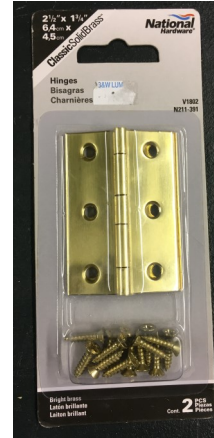


# Walls around Neptune and Uranus

- Materials Needed (makes 2 walls)  
4 pcs—8" X 22 1/2" - 1/2" plywood  
2 hinges—2 1/2" to 3" door hinge



# Feeder Tubes

## Materials Needed

- 1— 2X6 8' long—Cut 2 pcs 16" long & 2 pcs 24" long
- 1—4' pc of 3" PVC Schedule 40 pipe—Cut 2 pcs 16" long
- 4—3" long dry wall screws
- 4—1" long dry wall screws

## Directions

- Attach one 24" 2X6 to a 16" 2X6 with two 3" drywall screws as shown in Picture A
- Mark the upright 2X6 with a square 11" up from the base board and then mark a 45° angle as shown in picture A.
- Cut a 45° angle on one end of the 16" long 3" PVC pipe . Drill two holes (3/8") in one side of the pipe as shown in Picture B. Rotate the pipe 180° and drill two holes (3/16") the same distance from the end as shown in Picture B.
- Mark a line 1" above the 45° angle line, and align the bottom of the 3" PVC pipe with the line using a square as shown in Picture C. The end of the tube should be 2" past the edge of the 2X6 upright.
- Use two 1" drywall screws to fasten the tube to the upright as shown in Picture D.
- The feeder tube assembly should be placed on the outside of the field with the 45° angle end facing the launch pad. The tube should extend about 1/2" into the field and should be in the middle of the launch pad as shown in Picture E.

Picture A



Picture B



Picture C



Picture D



Picture E

