



ST. MARY'S CO.

Charlie Sasser

Field Sales Representative,
R&D Cross



PRINCE GEORGE'S CO.

Nya Segears

Soil Conservationist, USDA-
NRCs, Prince George's Soil
Conservation District



LEAD Maryland Class XIII

LEAD Maryland Foundation is dedicated to identifying and developing leadership to serve agriculture, natural resources, and rural communities.

CONNECT WITH US

LEAD Maryland Foundation, Inc.

124 WYE NARROWS DRIVE

QUEENSTOWN, MD 21658

LEADMARYLAND.ORG

(410) 827-8056



WORCESTER CO.

Victoria Spice

Agricultural Inspector,
Maryland Department of
Agriculture



FREDERICK CO.

Becca Tucker

Senior Business
Development Manager,
Frederick County Office
of Agriculture



DORCHESTER CO.

Emily Jackson Wright

Emily's Produce, a Family
Agritourism Business; Grain
and Livestock Farm



CECIL CO.

Jessica Zebley

Engineering Technician,
MDA, Cecil Soil
Conservation District



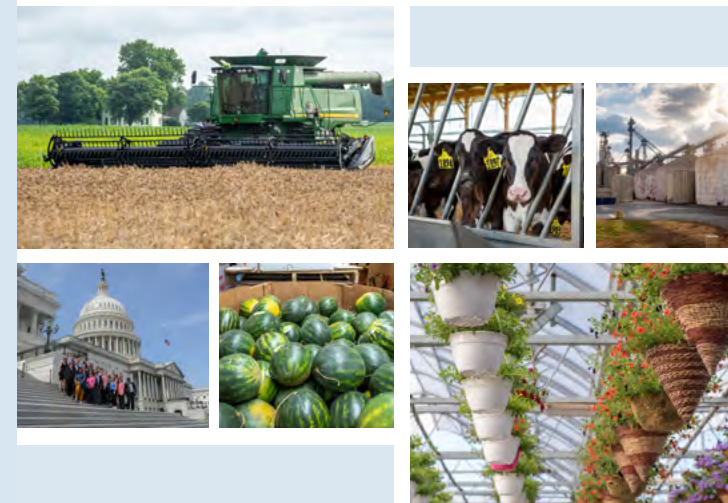
The University of Maryland Extension is an equal opportunity employer with equal access programs.

Photography by Remsberg, Inc.
Second Printing, November 2024



1999 25 YEARS 2024

CLASS XIII DIRECTORY 2024 - 2025





ANNE ARUNDEL CO.
Cristina Berthelot
Maryland Market Money
External Relations &
Development Coordinator,
SMADC



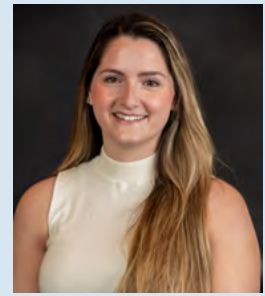
GARRETT CO.
Allison Boyd
Honey Moon Farm, Vegetables,
Laying Hens, Honeybees,
Cut Flowers



ANNE ARUNDEL CO.
Jill Calabro
Product Development
Manager, Valent USA



BALTIMORE CO.
Mandy Castillo
Prigel Family Farm
and Creamery



ANNE ARUNDEL CO.
Sierra Criste
Financial Programs
Specialist, MARBIDCO



QUEEN ANNE'S CO.
Jennifer Gannon
Gannon Family Farms;
Public Relations, Thompson
Ag Consulting



GARRETT CO.
Darryl Glotfelty
Meadow Mountain Hemp, LLC
and Harvest House



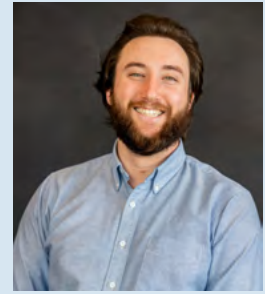
ANNE ARUNDEL CO.
Caroline Harper
Program Associate,
Agriculture; The Keith
Campbell Foundation for
the Environment



KENT CO.
Corrie Hopkins
Technology Development
Representative, Bayer Crop
Science; Grain and Hay Farm



HOWARD CO.
Tyler Hough
Director of Government
Relations, Maryland Farm
Bureau; Pigs and Beef Farm



ANNE ARUNDEL CO.
Harry Huntley
Agriculture Policy Lead,
Environmental Policy
Innovation Center



CAROLINE CO.
Stephanie Knutsen
Resource Conservation
Specialist, MDA; Dairy, Hay,
Grain Farm; Knutsen Crop
Insurance



HARFORD CO.
Jackie Koehn
Land Programs Manager,
Harford Land Trust



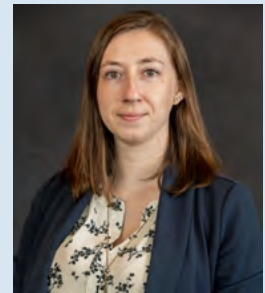
MONTGOMERY CO.
Rachel Neff
Manager, Payroll,
National Association of
Community Health Centers
(NACHC)



CAROLINE CO.
Cody Pettit
Senior Ag Relationship
Manager, Horizon Farm
Credit



CHARLES CO.
Kelly Phipps
Director of Legislative
Services, Town of La Plata



HOWARD CO.
Becky Remsberg
Conservation Partnership
Coordinator, Maryland
Department of Agriculture