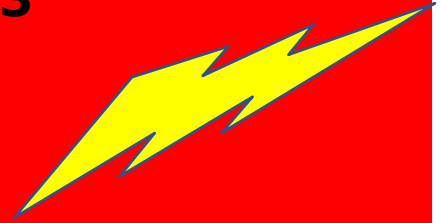


October 6, 2023

Friday Flash



September Meeting

Topic:

Native Carnivorous Plants

Speaker

Jeffrey Popp, WSA

Date

Tuesday
October 10th

Time

7:00

Location

Zoom

<https://umd.zoom.us/j/99439900369>



Continuing Education

Jeffrey Popp is the Director of Restoration at the Watershed Steward’s innovative restoration programs including RePlant Anne Arundel/Annapolis, RePollinate Anne Arundel, and Stormwater Success, to improve the health of the county’s communities, greenspaces, and waterways. He enjoys helping community Stewards navigate and create successful, well-maintained restoration projects that benefit wildlife, water quality , and surrounding communities. Before coming to the WSA, Jeff led several restoration programs for the Chesapeake Bay Trust focused on forestry, land conservation and stormwater management throughout the Chesapeake Bay watershed. Prior to the Trust, Jeff was the Manager of Conservation Projects for the Wildlife Habitat Council where he combined his passion for wildlife and restoration to design and managed wildlife habitat restoration projects on corporate-owned lands. Jeff has also served as Co-Director of the Terrapin Institute since 2003, where he continues to apply his passion for wildlife, especially his favorite group of animals-reptiles and amphibians!



In his spare time, Jeff enjoys gardening, fishing, hunting, herping, checking out local breweries, good food, and spending time outdoors with friends and family.

Favorite native plant: Winterberry (*Ilex verticillate*)

Fun fact: Jeff was the editor of an educational children’s book focused on Diamondback Terrapins.

From the WSA website.

Find recordings of previous meetings at [Just for Master Gardeners | University of Maryland Extension \(umd.edu\)](#) Scroll to the bottom of the page.

Thought-provoking YouTube video: ["To Squash Or Not To Squash – Musings On Invasive Species"](#)

Volunteer Opportunities

Native Plants are Here – The English Ivy Must Go! Planting and English Ivy Removal Event Saturday, October 14th 9 AM – 12 Noon

English Ivy pushes out and excludes almost all other vegetation! It has overrun Forest Conservation Area #9 in Park Retreat subdivision for too long and is on its way out! Volunteers are needed to help remove the ivy and plant natives in its place (in the interest of full disclosure, there might be more pulling than planting). If you are thinning out shade-loving natives, feel free to bring your extras! Feel free to come late and/or leave early. Refreshments provided! MG Volunteer hours given for this project (when submitting hours, state that Fran Garcia approved this project).



103 Natalie Lane,
Millersville, MD
Ample parking.
Follows signs to site
(2 -minute walk).
For more information,
contact Andrea Weir
(andreawei@msn.com)



In search of a Master Gardener to speak about container gardening using native plants at the South County Senior Center. We want to have a make and take workshop where participants leave with a container garden. The seniors may be asked to pay a materials fee. Because the center is closed on weekends, the event must be on a weekday. Please contact [Ann Sawyer](#).

We have an opportunity to have an **Ask A MG table** at the Gambrills Mid Atlantic Community Church Eco Fair on Saturday, November 4th from 10:30 AM-1:30 PM. For more information, contact [Robin Costa](#)





The Interagency Bee Lab (via Sam Droege)

See picture at left for the site, basically a giant rectangle, there will be a 3rd hoop house planted there later this winter, there will be a curated selection of mountain mint and ironweed planted there from Mt. Cuba (thank you Sam Hoadley), Facilities King Chuck Wicks will lay down the rest of the mulch for the site tomorrow before we come to plant.

Goal: Plant

Subgoal: Plant most of the plants in Pen 5 (some are shrubs and going elsewhere) some to my house because I have sandy soil which things like lupine like more than the clay at the lab.

Need: Planters (that would be you)

Date/Time: Saturday (10 AM - 2 PM)

Thank you, planters who came out this last Saturday and Thursday; you were a huge help. See you in the dirt!



It's Seed Swap Time!

2023 BY THE NUMBERS:

175 Attendees

6,500 packets of free seeds

200 free books

12 Door Prizes

And we expect this year to be even better! Want to get involved?

DONATE SEEDS: Bring your saved, unused seeds to the Extension Office or one of our seed cleaning and packaging workshops (details below). Please remember to put the **seed name, year it was harvested**, and **name, and contact number/information** on your packets. **No invasives will be accepted.** You do not need to participate in a workshop just to drop off seeds.

See workshop dates/info in Events Grid below.

For further information: [Sophie Sterling](#)

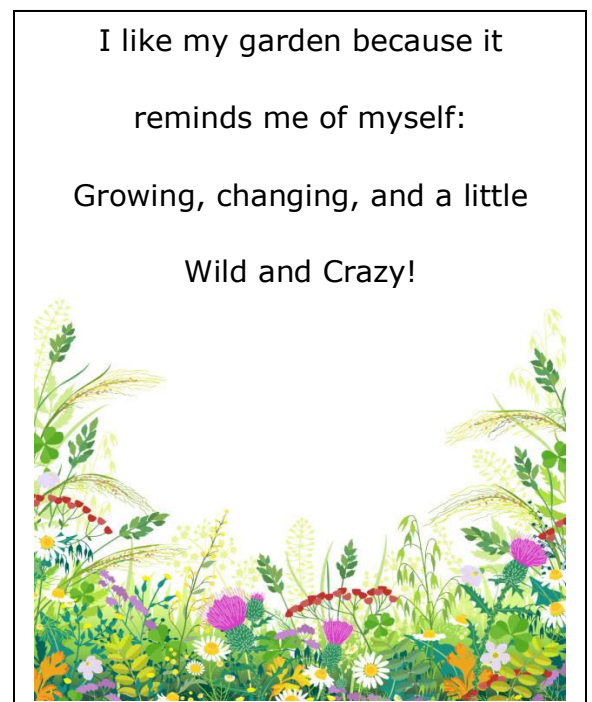
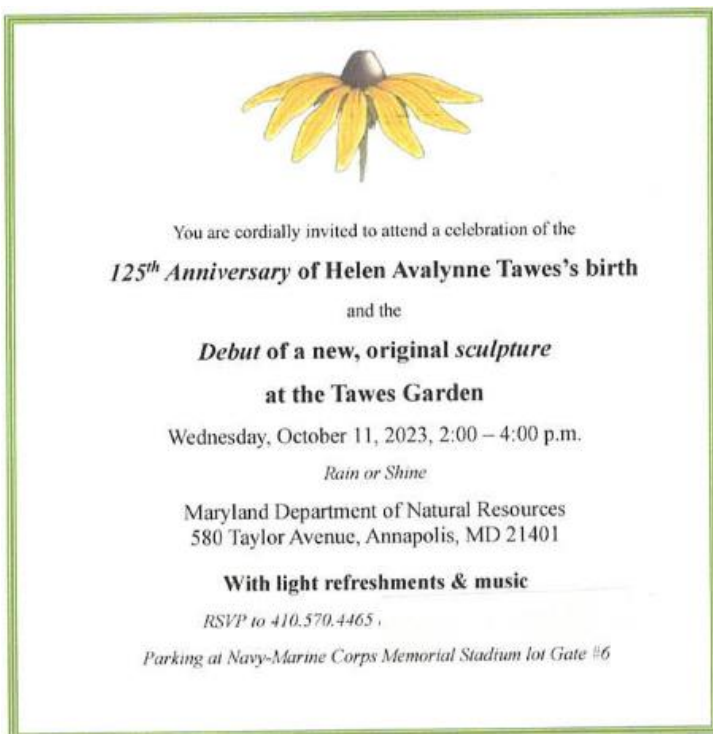


For Your Information

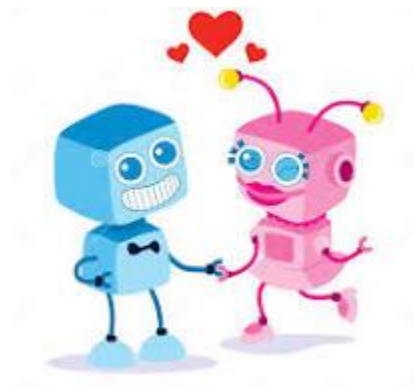


Attention Master Gardeners- looking for volunteers to help plant 40 shrubs and trees on a community waterfront property in Carrollton Manor. A landscaper will provide an auger to drill the holes ahead of the planting so no digging will be required. All trees and shrubs are 5 ft. tall or less.

Date: Saturday, Nov. 4th from 10-1 (rain date Nov. 5th). Refreshments will be provided. The location is at Hillbottom Beach, 725 Shore Rd. in Severna Park. Questions? Contact [Kristin Silva](#), Watershed Steward, Master Gardener, phone: 443-254-3133.



Friday Funshine



Why did the robot couple celebrate their anniversary in the fall?
Because they were autumn-mated!

EVENTS

Project/Activity	Date/Time	Location	Contact Information
Dairy Farm Veggie Garden	Second Saturday & fourth Thursday (beginning 3/11)	AAMG Extension Office	Malcom Doying Pat Shema
Hancock's Resolution	9:30-12:30 first and third Tuesdays, 1:00 - 4:00 Sundays through October.	2795 Bay Beach Rd. Pasadena 21122	Sign-Up Genius Loretta Gerbrick Betsy Beck Nancy Allred
Tawes Garden Sculpture Debut	Tuesday morning, 8am-12noon Wednesday, 10/11 ; 2-4	Tawes Garden 580 Taylor Ave. Annapolis, 21401	Cindy Wells Kathy Devine
South County Senior Center Educational Outreach Tabling and workdays	10/14, 10am-12pm (workday and tabling event)	27 Stepneys Lane , Edgewater, 21037	Elena Corbett and Caroline Donovan
Carrollton Manor Tree Planting	11/4 10 AM -1 PM	Hillbottom Beach, 725 Shore Rd. in Severna Park	Kristin Silva
2023 Seed Swap workshops	Mondays: 11/6; 11/13; 12/4; 12/11 10 /AM – 2 PM	Extension Office 100 Dairy Farm Rd., Gambrills	Sophie Sterling