

---

**JANUARY - FEBRUARY 2009!!**

---



**ALL THE BEST FOR A  
HAPPY and HEALTHY  
NEW YEAR!!**

### In This Issue:

Talbot Co Extension Office  
USDA  
Talbot County Corn Club  
Grain Marketing website  
Nutrient Management  
Upcoming Events  
Calendar of Events  
Horticultural Update

### We've Moved!

The University of  
Maryland  
Cooperative  
Extension  
Talbot County



Office is now located at the  
Agriculture Service Center off Glebe  
Road with the Talbot County Soil  
Conservation District, NRCS and  
FSA. All of the agriculture agencies  
in Talbot County are under one roof!  
Our new address is 28577 Mary's  
Court, Suite 1 in Easton. Come see us  
- We look forward to seeing you!



**Cropping Systems Research  
and Extension Web Page  
at the University of Maryland**

### Variety Trials

Variety trial results are posted on

[www.mdcrops.umd.edu](http://www.mdcrops.umd.edu)



**USDA: Average corn price lower in 2008 than 2007**

In its newest corn supply and demand estimates, the USDA reported the estimated average farm price for corn in 2008 at \$4/bu. – lower than the price for corn in 2007. Leaders at the National Corn Growers Association (NCGA) pointed out that this proves that higher ethanol demand can be accommodated with little impact on corn and food prices. The USDA estimates corn production at just over 12 billion bushels and yield at 153.8 bu./acre, with total corn supply at nearly 13.7 billion bushels. These numbers are the same at November’s estimate, but some changes were made to the USDA’s estimates for corn demand. - *Corn & Soybean Digest*

**Talbot County Corn Club and Soybean Improvement Awards**



The 57<sup>th</sup> Annual Talbot County Corn Club and the 38<sup>th</sup> Annual Soybean Improvement awards were held on Tuesday January 6, 2009 at the VFW on Glebe Road. The speaker this year was Dr. Joshua McGrath, Assistant Professor for UMD discussing Recent Advances in Nitrogen Management and Dr. Robert Kratochvil, UMD Agronomist, which reviewed the crop year and corn club entries. 2009 Officers are Elaine Altvater President and Raymond Harrison, Vice President.

The Corn Club is a yield contest therefore samples are taken from prime farmland on a small parcel. The reported yields do not

reflect averages for fields or for the county. Field and county averages will be well below the contest yields

1<sup>st</sup> Place Corn Club  
Raymond T. Harrison, Jr.  
203.63 bu/ac  
DEKALB #61-73

2<sup>nd</sup> Place Corn Club  
Donald Foster  
192.36 bu/ac  
DEKALB #61-69

3<sup>rd</sup> Place Corn Club  
Tim Bishop  
186.40 bu/ac  
Seed Consultants SC11VTT28

Youth Champion  
Matt Altvater  
202.88 bu/ac  
DEKALB DK52-59

1<sup>st</sup> Place Irrigated Category  
Bruce Bartz  
307.50 bu/ac  
DEKALB #63-42

1<sup>st</sup> Place Soybean Improvement

DOUBLE CROP  
Cecil H. Gannon & Sons Inc  
48.97 bu/ac

FULL SEASON  
John Swaine III  
37.13 bu/ac

**The Club would again like to thank the participants, sponsors and unit leaders that make this event possible.**

## Grain Marketing Website

This website is growing so bookmark it and look at it periodically. Listed on this site are upcoming trainings, historical information and crop budgets. A new page titled **LEASE AGREEMENTS** has been added to the site.



[www.mdgrainmarketing.umd.edu](http://www.mdgrainmarketing.umd.edu)

## **NEW Maryland Custom Rates Available**

A survey was conducted in fall of 2008 for new custom rates for various farm activities in Maryland. For a copy of the custom rates contact the Talbot County Extension Office at 410-822-1244 or [sdill@umd.edu](mailto:sdill@umd.edu)



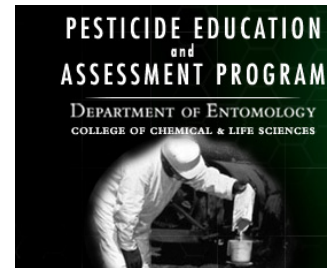
## **Nutrient Management Voucher Training**

A Nutrient Voucher is required for anyone spreading fertilizer or manure on more than 10 acres. The training certifies you in application and record keeping. If you are not certified and want to be certified please contact the Extension office at 410-822-1244.

The class is free and certifies you for 3 years. Many of your certifications have run out. If you are unsure whether or not you need a voucher, need to be certified or re-certified please call the Talbot County Extension office.

## **DON'T FORGET!**

Private Applicator Re-Certification Training in Talbot County is February 9 at the Talbot Ag Center from 7:00 pm until 9:00 pm.



## **UPCOMING EVENTS**

### **Regional Land Use Policy Forum**

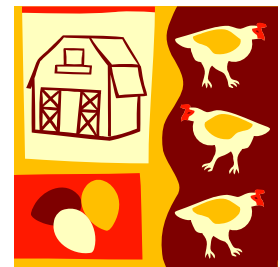
*Time for a regional approach!*

You are invited to attend an educational Regional Land Use Policy Forum at Chesapeake College, Todd Performing Arts Center, Wye Mills, MD. This meeting will address how land use polices could affect the Eastern Shore. There will be a panel of speakers representing all aspects of the land use issues. Attendees will be given the opportunity to ask questions to the panel. For more information contact: Jenny Rhodes 410. 758.0166

Date: January 21, 2009 Time: 7:00 p.m.  
Sponsored by: Queen Anne's County Farm Bureau and Queen Anne's County Cooperative Extension

### **Small Flock Short Course Series**

Interested in owning a small flock? Do you already have a small flock? Raising a backyard flock can be very rewarding for the entire family. Being informed on good management practices and disease prevention is important to produce a healthy, productive flock. These short course series will discuss topics ranging from basic bird management,



poultry nutrition, home processing, regulations, diseases and many more. There will be poultry specialists available at each location to answer poultry questions.

February 21, 2009 Charles County Extension Office - LaPlata, MD

March 14, 2009 Kingstown Farm Home & Garden - Chestertown, MD

March 28, 2009 Carroll Community College - Westminster, MD

Courses are from 9am – 12:30pm. An Advanced Course will follow on May 2, 2008. All dates are open to all flock owners and anyone interested in poultry. Contact Jessica Renshaw at 410-742-1922 or [jrenshaw@umd.edu](mailto:jrenshaw@umd.edu) to register for a session and for driving directions.

### **Online Workshops – Spring 2009**

The Institute of Applied Agriculture, University of Maryland is offering online classes open to anyone that wants to learn.

Three classes are offered: Pesticide Use and Safety, Pasture Management and Hay Production, and Equine Nutrition. The Pesticide workshop would be the same as six months of on the job experience so you could qualify to take the commercial pesticide exam.

For more information: [www.iaa.umd.edu](http://www.iaa.umd.edu)



## **ANNIES PROJECT**

*Annie's Project*

### **University of Maryland Cooperative Extension Offers Farm Management Classes for Women**

The University of Maryland Cooperative Extension will conduct Annie's Project during the winter of 2009. Annie's Project focuses on the many aspects of farm management and is designed to empower women in overall farm decision making and to build local networks throughout the state. The target audience is farmwomen with a passion for business, agriculture and involvement in the farm operation. Topics for the sessions cover the five areas of Risk Management – Production, Marketing, Financial, Legal Risk, Human Resources. This course is open to anyone interested in farm management practices. The course will be 8 evening sessions starting on Wednesday, January 14, 2009 with classroom and computer lab work. This course is open to anyone interested in farm management practices. If you require special assistance to attend the classes please contact 410-822-1244.

Wednesdays Jan 14 – March 4, 2009

Chesapeake College Economic Development Center

6-9pm \$25.00 per person

Includes Dinner and All Materials

For registration information contact:

Jenny Rhodes [jrhodes@umd.edu](mailto:jrhodes@umd.edu) 410-758-0166 or Shannon Dill [sdill@umd.edu](mailto:sdill@umd.edu) 410-822-1244.

**REGISTER NOW!**

## Advanced Small Farm Courses

Are you looking for more information for your small farm? Well, these sessions are for you. Held Saturdays from 9am-12pm at the Talbot County Cooperative Extension Office these sessions are designed to provide more in-depth information for your farm enterprise. These courses are open anyone interested in small farm production and pre-registration is required. Sessions cost \$5 each to cover handouts and refreshments. For more information contact 410-822-1244 or [sdill@umd.edu](mailto:sdill@umd.edu).

### **January 31, 2009 – THE WOODS IN YOUR BACKYARD: How to Create and Enhance Natural Areas Around Your Home**

Small lots, such as the one you may own, are a big deal. The vast majority of landowners in Maryland have less than 10 acres. This land, wooded or not, is a vital resource for all. By enhancing or creating natural areas and woodland on your lot, you can enjoy recreation, aesthetics, and wildlife while providing environmental services like water filtering and carbon sequestration. If your lot connects to other lots, there's ample opportunity to make an even bigger impact by getting neighbors involved! Owners of even just a few acres can make a positive difference in their environment through planning and implementing simple stewardship practices learned at The Woods In Your Backyard Workshop.

Instructor: Nevin Dawson, Forest Stewardship Educator, University of Maryland Extension

### **February 28, 2009 – ORGANIC 101**

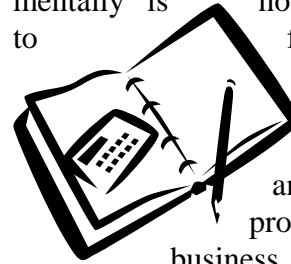
Trying to decipher the NOP? Don't understand OMRI? Never fear, we will walk you through the process of transitioning

(jumping right in vs. intensive cover cropping), certification (why or why not?), pest management, soil improvement (manures, compost) and farm management (what to plant when, when to start transplants, do I need to hire help?) for organic vegetable production. A hands-on, interactive 3-hour program with resources. Instructor: Laura K. Hunsberger, Extension Educator, University of Maryland



### **March 21, 2009 – BUSINESS PLANNING**

Planning is essential to any business, no matter how large or small your inventory, payroll and bank account. To be successful a farm operation must know its current status and future plans. Having these plans mentally is not enough! Taking time to formulate thoughts, evaluate your business, devise a strategy, and anticipate possible problems will help your business be successful. This workshop will offer information and helpful tools, including a workbook and CD, to complete your farm business plan. Instructor: Shannon Dill, Extension Educator, University of Maryland



## **Tool Time for PreHarvest Marketers**

What pricing tools are available to grain marketers before harvest? This workshop will use the example of a pre-harvest plan for corn in 2007 to illustrate the pros and



cons of six different pricing tools: forward contracts, selling futures contracts, hedge-to-arrive contracts, buying put options, forward contracting and buying call options, and selling calls to form a price window. Once they develop a better understanding of the tools, your customers will be invited to “test drive” these tools in a realistic marketing game.

January 29, 2009  
Chesapeake College  
Jenny Rhodes, 410-758-0166,  
[jrhodes@umd.edu](mailto:jrhodes@umd.edu)

February 4, 2009  
Princess Anne  
Richard Nottingham, 410-651-1350,  
[jnotting@umd.edu](mailto:jnotting@umd.edu)

Sessions are from 9am – 2pm.

These sessions are open to all. If you need special assistance please register 1 week ahead of time.



## **SURVIVING THE RISK: A LOOK AT LEASE AGREEMENTS, BUDGETS, MARKETING AND MORE!**

The University of Maryland Extension has created a series of winter workshops for farmers and landowners on the Eastern Shore focusing on surviving the risk. With today’s escalating input costs, and volatile commodity markets it is increasingly important to reduce risk on the farm.

The topics that will be addressed are crop budgets, flexible lease contracts, basic grain marketing, and crop insurance. New for 2009 are crop budgets and custom rate survey. We will also share innovative lease contracts being used in the Mid-west. This topic will address the basic requirements of a lease contract from the owner and the operator’s viewpoint. We will also present some basics about managing and marketing grain.



Dates are:  
January 15, 2009 –  
Kennedyville  
Register John Hall, 410-  
778-1661, [jehall@umd.edu](mailto:jehall@umd.edu)

January 20, 2009 – Salisbury  
Register Richard Nottingham, 410-651-  
1350, [jnotting@umd.edu](mailto:jnotting@umd.edu)

January 27, 2009 – Chesapeake College  
Register Jenny Rhodes, 410-758-0166,  
[jrhodes@umd.edu](mailto:jrhodes@umd.edu)

The workshops are from 8:30 am to 3:00pm.

These sessions are open to all. If you need special assistance please register 1 week before the date. Registration cost \$15 and

includes breakfast, lunch and materials. Please register one week ahead of time.

## **6th Sustainable Nursery Crop Production Conference**

February 3, 2009

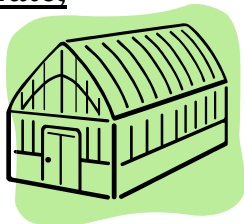
Patuxent Wildlife Center

9:00 AM - 3:30 PM

No cost for program, but registration required no later than: **January 25, 2009**

Mail registration form to: Debby Dant, Wye Research & Education Center

## **Principles of Substrate, Water and Nutrient Management for Nursery and Greenhouse Operations**



The University of Maryland is offering a course entitled “Principles of Substrate, Water and Nutrient Management for Nursery and Greenhouse Operations” during the spring semester, 2009. The course will cover the basics of soilless substrate management, irrigation system design and management, stormwater management and fertilization / nutrient management. The course is being offered primarily to undergraduate and graduate students (for credit), but will also be offered to extension professionals, growers and allied industry professionals (certificate-based). The course will be offered in four (1 credit) modules, which will be taught sequentially, i.e.

### **Soilless Substrates (PLSC 461):**

26 January – 20 February, 2009.

### **Irrigation Management (PLSC 462):**

23 February – 20 March, 2009.

### **Surface Water Management (PLSC 463):**

23 March – 10 April, 2009.

## **Fertilization and Nutrient Management (PLSC 464):** 13 April – 8 May, 2009.

Individuals can register for one or more modules. The cost for industry professionals is \$62.50 per module, with a price break for those registering for all four modules (\$200).

***NOTE: Each Module Qualifies for Three (3) Nutrient Management CEU's from the MDA The course will be limited to a maximum of 15 registrants, so early registration is recommended.*** The course content will be primarily delivered over the internet using Moodle, so internet access and a basic proficiency with computers is required. However, beginner computer users will have little difficulty using Moodle to access the course content over the web.

If you have any further questions, please contact either Dr. John Lea-Cox at (301) 405-4323 (JLC@umd.edu), Dr. David Ross at (301) 405-1188 (dsross@umd.edu) or Dr. Andrew Ristvey at (410) 827-8056 (aristvey@umd.edu).

## **CALENDAR of EVENTS**

---

**Talbot County Annual Corn Club and Soybean Improvement Event**, Easton VFW, January 6, 2009, 6:00 pm (see article above for more information)

### **Grain Marketing**

January 7, 21 February 4, 18  
March 4, 18 April 1, 15, 29 -  
Denny's Restaurant, Route  
50 Easton 6:30am  
Speaker January 21 – Chad  
Nagel, Nagel's Farm Service



### **Delaware Ag Week**

January 5 – 10, 2009

Delaware State Fair Grounds, Harrington  
<http://www.rec.udel.edu/AgWeek/home.htm>

**Mid Atlantic Direct Marketing  
Conference**

Atlantic City, New Jersey  
January 13-16, 2009  
302-831-1317 or [www.madmc.com](http://www.madmc.com)

**Annie's  
Project**

January 14 –  
March 4, 2009  
Chesapeake  
College, Wye Mills MD  
410-822-1244



**Farming for Profit and Stewardship  
Conference: Future Harvest Conference**

Jan. 16-17, 2009, Fredrick, Maryland  
[www.futureharvestcasa.org](http://www.futureharvestcasa.org)

**Horse World Expo**

January 15 – 18, 2009  
Maryland State Fair Grounds, Timonium  
[www.horseworldexpo.com](http://www.horseworldexpo.com)

**Women in Agriculture**

January 22-23, 2009 Dover Downs, Dover  
For more information call Laurie G.  
Wolinski at the University of Delaware at  
302-831-2538 or email her at [lgw@udel.edu](mailto:lgw@udel.edu)

**Pesticide Re-Certification**

Talbot Ag Center, Easton  
Register at 410-822-1244  
February 9, 2009, 7-9pm

**Nutrient Management Voucher  
Certification**

February 11, 2009 9am – 11am  
Talbot County Ag Center  
Register at 410-822-1244

**2009 Bay Area Fruit Meeting**

Wednesday February 18th 2009  
Queenstown MD  
For more information: Mike Newell

**Pesticide Certification**

March 5, 2008 Class  
March 17, 2008 Test  
Caroline County Register at 410-479-4030

Sincerely,

Shannon Dill  
AGNR Educator  
[sdill@umd.edu](mailto:sdill@umd.edu)

Pam Chollet  
Admin Assistant  
[pchollet@umd.edu](mailto:pchollet@umd.edu)

Heather Buritsch  
Urban Horticulture  
[buritsch@umd.edu](mailto:buritsch@umd.edu)

**Maryland Cooperative Extension**

Talbot County  
P.O. Box 519  
Easton, MD 21601  
(410) 822-1244



**GO TERPS!!!**