

JANUARY - FEBRUARY 2012

**In This Issue:
Get Involved
Pesticide Disposal
Upcoming Events
Urban Horticulture**



**The legislative season
is upon us. With
TMDLs, federal, state
and local regulations**

**it is more important than ever to be an
informed and active citizen.**

4 Reasons to Get Involved

(Ohio Farm Bureau)

You can make a difference by getting involved. Here are some reasons why farmers need to be politically active:

1) The agriculture industry is our livelihood and grassroots political action is simply a cost of doing business. It's no different than other costs associated with farming, such as buying fertilizer, replacement heifers or seed corn.

2) As farmers, we make up less than 2 percent of the nation's population. Therefore we must amplify our voice to make sure we are heard in the halls of the county courthouse, the Statehouse and in Congress. There is strength in numbers! The more individual farmers become engaged in the process, the more effective we become.

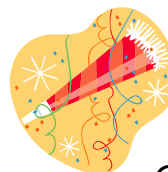
3) Candidates and elected officials need to hear from us personally. This puts a human face on the issues critical to us. Politics is a contact sport and only those who have effective contact with candidates and officials will win.

4) And don't forget that our opponents are already organized, involved and working for candidates who wish to make it more difficult for you to stay in business.

To Contact Your Elected Officials:

www.usa.gov/Contact/Elected.shtml

www.talbotcountymd.gov



Look up to the northern sky on January 3/4. The Quadrantids Meteor Shower is expected to be an above average show in 2012 with up to 40 meteors per hour at their peak. Best time to view? About an hour before dawn.

REMINDER - Pesticide Disposal Program Act Now!

If you have any pesticides that are in need of disposal, PLEASE participate in this year's program. It is not known when the next will be offered due to budget restraints.

After a four year absence, the Maryland Department of Agriculture will once again offer an unwanted, unusable and/or obsolete pesticide disposal program. This program has operated "regionally" in the past. However, due to budget cuts, the Department has not had a program in place since 2007.

The 2011/2012 program will be offered throughout Maryland. This is a **FREE** program for any agricultural operation (farm, forest, nursery, greenhouse, etc.). As we cannot guarantee if and when this program will be offered again, MDA urges anyone with unwanted or unusable pesticides to take advantage of this year's program.

Registration forms are available on-line at www.mda.state.md.us/pdf/regform.pdf or by calling the Pesticide Regulation Section office at 410-841-5710. Registration forms will also be available, in limited quantities, at each University of Maryland County Extension Office.

For more information, please contact Rob Hofstetter at the number above or via email at hofsterj@mda.state.md.us. Registrations are due no later than January 16, 2012, with a scheduled on-farm pick-up date beginning April/May

MD Crops Website – www.mdcrop.umd.edu

A new look to the MD crops website. Corn variety trials are now posted. Soybean is coming soon.

Grain Marketing Website –

www.mdgrainmarketing.umd.edu

Updated crop budgets have been posted. Custom rates for 2011 coming soon.

Talbot County Corn Club and Soybean Improvement Awards



It's confirmed!!

The Talbot County Corn Club is the longest consecutive running corn club in the USA!!! The 60th year celebration will be held on Wednesday, January 11, at the VFW on Glebe Road in Easton. We are proud to be a part of this Talbot County Tradition. Tickets are still available.

The club would again like to thank the participants, sponsors and unit leaders that make this event possible.

UPCOMING EASTERN SHORE AGRICULTURE PROGRAMS **Winter 2012**

TALBOT COUNTY CORN CLUB

January 11, 2012

This year we will celebrate the 60th Annual Corn Club event. We would like to invite those that have been involved in the club in the past to come and celebrate.

SHEEP AND GOAT WEBINAR SERIES

A series of webinars will be held on consecutive Thursday nights in January and February 2012. The webinars will focus on the feeding and nutrition of sheep and goats.



January 12 - Digestive physiology

January 19 - Nutrients

January 26 - Feedstuffs

February 2 - Nutritional management

February 9 - Rational balancing

February 16 - Nutritional disorders

Each webinar will begin at 7:30 p.m. EST and last for approximately one hour. An hour of questions and answers will follow. Topics may overlap more than one webinar. University of Maryland Extension Specialists and Educators will be the instructors for the webinars.

Anyone with an internet connection may participate in the webinars. High speed access is recommended. The first 100 people who log onto <https://connect.moo.umd.edu/sschoen/> will be able to participate. All webinars will be recorded and available for later viewing at <http://www.sheepandgoat.com/recordings.html>.

Even though pre-registration is not required, those who plan to participate should contact Susan Schoenian at sschoen@umd.edu, so that they can be added to the webinar e-mail reflector list. People who registered for last year's webinars should already be on the list and receive e-mail notification of the 2012 webinar series.

A flyer for the webinars can be downloaded from <http://www.sheepandgoat.com/programs/2012webinars.pdf>.

DELAWARE AG WEEK

January 17-20

Location: Delaware State Fair Grounds, Harrington DE



<http://rec.udel.edu/agweek/home.htm>

Delaware Agriculture Week consolidates agriculture related educational meetings while recognizing and celebrating the industry's importance. The University of Delaware Cooperative Extension, Delaware State University Cooperative Extension and Delaware Department of Agriculture are cooperating with many partners to organize the week of agriculture related events. For general information regarding Delaware Ag Week

contact Cory Whaley at (302) 856-7303 or whaley@udel.edu.

TIMBER TAX WORKSHOP

Time: 6:30 - 9 p.m. Registration deadline Friday, January 13

Location: Wye Research & Education Center, 124 Wye Narrows Drive, Queenstown, MD 21658

Cost: \$10

Details: This program will focus on record keeping, how to handle cost share payments on practices such as reforestation, rental payments for federal programs such as CRP, how to report timber sales and capital gains and ways to treat casualty losses on your forest lands. Copies of the University of Maryland Extension's updated Forest Management Account Book will be available to all participants. Additional information will be presented on valuable web resources to assist you when doing your federal taxes. This program is guaranteed to save you money by properly reporting your timber sales and cost share payments on your federal and state income tax forms.

Contact: Registration, contact Bob Tjaden, rtjaden@umd.edu, 410-827-8056

MARYLAND HORSE WORLD EXPO

January 20-22

Location: Maryland State Fairgrounds, Timonium, MD



BEEKEEPING 101

January 21

Location: Wye Research Center

Time: 9:00 am -12:00 noon

Location: Wye Research and Education Center in Queenstown, Maryland

Mike Embrey, University of Maryland Extension Apiculturist, will be offering a beginning beekeeping class.

You will Learn ...

- About bees, in general
- About beekeeping equipment
- How and where to set up and establish a hive

- How to use a smoker
- How to hive a package of bees

The classes will be held one Saturday per month through April. A final session will be held approximately the third week of September and will teach how to winterize and protect your hives and bees from diseases and pests.

For program information, contact Mike Embrey, 410-827- 8056 X148, membrey@umd.edu.

Farmer Training & Certification for Crop Operations using Manure and Fertilizer

January 24 & February 6, 2012

Learn how to write a nutrient management plan for your own operation. This course focuses on crop operations using manure and fertilizers.

Time: 9:30 a.m. - 4:40 p.m.

Location: University of Maryland Wye Research and Education Center

Contact: Maryland Department of Agriculture at 410-841-5959

producers to increase sales by introducing them directly to food purchasing decision-makers.

WHEN:

Tuesday, January 24, 2012
9:00 a.m. – 1:00 p.m.

WHERE:

Navy-Marine Corps Memorial Football Stadium - VADM William P. Lawrence “N” Room 550 Taylor Ave. Annapolis, MD 21401

More information on this event will be made available through www.marylandsbest.net as the event draws closer. To register, or for questions please contact the Maryland Department of Agriculture, Marketing Specialist - Stone Slade at (410) 841-5779 or sladewg@mda.state.md.us.

Annie’s Project

January 25 – March 14

Wednesdays 6:00 – 9:00pm

Location: 8 Locations in Maryland and Delaware

www.anniesproject.umd.edu

Annie’s Project is designed to empower farm women to manage information systems used in critical decision-making processes and to build local networks throughout the state. The target audience is women who have an interest in agricultural related fields with a passion for business and involvement in the operation. Project Topics cover the five areas of Risk Management –Production, Market, Financial, Legal Risk, Human Resources.



Maryland Buyer-Grower Meeting

The Maryland Department of Agriculture (MDA) will be holding a buy-local trade show on Tuesday, Jan. 24, 2012 for Maryland growers and producers to have the opportunity to display their products and regional and local buyers to have a chance to speak with them one-on-one.

This year the event will be held at a larger venue, the Navy-Marine Corps Memorial Stadium VADM William P. Lawrence “N” Room in Annapolis, MD. A fee of \$20 for exhibitors will be charged to help offset costs of the event. It is also partially funded through support of the USDA Specialty Crop Block Grant program, the USDA Risk Management Agency and the Maryland Agricultural and Resource Based Industry Development Corp.

WHAT:

MDA will hold a trade show style meeting to provide opportunities for Maryland growers and



**The Executive Program for Producers:
Farm Marketing and Financial
Management Workshop**

Date: January 25-26 2012

Place: Sheraton Dover Hotel, Dover DE

The Executive Program for Producers: Farm Marketing and Financial Management Workshop is a popular program offered throughout various regions in the U.S. The two and a half day workshop incorporates farm marketing, risk management, and financial management into a straight forward and easy to understand format that will enhance the financial health and profitability of your farming operation. More than just a marketing workshop the comprehensive program covers fundamental and technical analysis; crop insurance; pricing objectives; financial analysis; succession; understanding how to use options; futures; developing and monitoring your marketing plan via per bushel and revenue goals; a case farm exercise making sales decisions via market simulation; and putting your plan on paper:

This workshop will teach you the skills and give you the tools you need to be successful in 2012 and beyond!

For a glimpse of the type of material that will be covered at your TEPP conference, click here: www.GrainMarketingPrimer.com

To register for the Dover, DE TEPP Workshop go to: <http://www.theexecutiveprogramforproducers.com/>

Partial Funding Sponsored by RMA-USDA, the Delaware Department of Agriculture, the University of Maryland, and the University of Delaware.

For further information and/or to register contact: Jeff A. Beal, Gulke Group, 602-795-5893, JeffABeal@aol.com or Carl L. German, University of Delaware, 302-831-1317, clgerman@udel.edu or log on to:

GRAIN MARKETING UPDATE

February 17, 2012

7:30am – 11:30am

Locations: Chesapeake College HEC 110

A new year and WOW what markets? This breakfast meeting will include speakers on various topics in grain marketing. Come have breakfast and discuss this year's strategies for marketing your grain. Speakers include marketing specialists, grain elevators, traders and more. Topics include using options, tax considerations, crop insurance and marketing outlook for 2012. Please register by February 13th 410-822-1244 or sdill@umd.edu.

Cost: \$20 per person and includes breakfast and materials

**EASTERN SHORE VEGETABLE
MEETING**

February 21

Location: English Hall, Eastern Shore Hospital Center, Cambridge MD

Register: 410-228-8800 or samathew@umd.edu



Pesticide and Nutrient Management

**Private Applicator
Certification
Upper Shore - Class January
12, Exam January 19**

Time: 7-9 pm

Location: Kent County Extension Office, 709 Morgnec Rd. Chestertown, MD 21620

Register: 410-778-1661 or jdouthit@umd.edu

Mid Shore – Class February 29, Exam March 7

Time: 7-9 pm

Location: Caroline County 4-H Park

Register: 410-228-8800 or samathew@umd.edu

Lower Shore - Class March 6, Exam March 13

Time: 1-3pm

Location: Wicomico Extension Office

Register: 410-749-6141 or email

rosnkrnz@umd.edu



Private Applicator Recertification and Nutrient Management Voucher

These will certify you for both pesticide and nutrient voucher. There are also online classes available for certification.

March 15 – Talbot County

Time: 6:00 pm – 9:00 pm
Location: Talbot County Ag Center, Hiners Lane Easton, MD
Register: University of Maryland Extension 410-822-1244, sdill@umd.edu

GET RECERTIFIED ONLINE IN THE COMFORT OF YOUR OWN HOME! Nutrient Voucher

April 13, 2012 – 4-6pm. To register please call 410-222-6757

Pesticide Re-Certification

April 20, 2012 – 4-6pm. To register please call 410-222-6757

Agronomy Days

**all agronomy day attendees will receive pesticide private applicator credits and nutrient voucher credits*

CECIL COUNTY AGRONOMY DAY

January 24
Time: 8:30am – 5:00pm
Location: Calvert Grange
Register: 410-996-5280 or dbehnke@umd.edu

LOWER SHORE AGRONOMY DAY

January 25
Time: Daytime
Location: TBA
Register: 410-651-1350 or jnotting@umd.edu

DORCHESTER COUNTY AGRONOMY DAY

January 31
Time: 8:30am to 3:30pm
Location: English Hall, Eastern Shore Hospital Center
Register: 410-228-8800 or samathew@umd.edu

CAROLINE COUNTY AGRONOMY DAY

February 15
Time: 5:30 – 10:00pm

Location: Caroline County 4-H Park, Denton MD

Register: 410-479-4030 or jlewis2@umd.edu

QUEEN ANNE’S AGRONOMY DAY

March 2
Time: 8am – 1PM
Location: Queen Anne’s County 4-H Park, Centreville, MD
Register: 410-758-0166 or jrhodes@umd.edu

All of us would like to thank you. Please feel free to come in with your questions, suggestions or comments.

Here's to a Happy, Safe and Profitable 2012!

Sincerely,

Shannon Dill
AGNR Educator
sdill@umd.edu

Pam Chollet
Administrative Assistant
pchollet@umd.edu

Heather Buritsch
Urban Horticulturist
buritsch@umd.edu

Sherman Councill
Nutrient Management Advisor
wcouncil@umd.edu

**University of Maryland Extension
Talbot County**
28577 Mary’s Court, Suite 1
Easton, MD 21601
(410) 822-1244

www.talbot.umd.edu