

## Master Gardener State Newsletter

A Newsletter for Master Gardener Volunteers from the State Master Gardener Office

### Greetings From Jon *by Jon Traunfeld*



Spring is the season that most reminds me of Earth's vibrancy and resilience. Plants and animals (including UME's Master gardeners!) spring to life with the warming and lengthening days. We have so much to look forward to this year as we build on last year's successes and identify new opportunities. The Home and Garden Information Center, Master Gardener Program, and Grow It Eat It are three of UME's most popular and effective programs and Master Gardeners are at the center of all this action- there is truly never a dull moment!

Funding for UME has decreased over the past 10 years, while demand for our programs has increased. Continued cutbacks in the public sector will require us to get even more creative in fully using existing resources, while

searching for new resources. One of the places to start is our own local UME office. This is home base for all of our county/city Master Gardener programs, a place where we hold meetings and events and use equipment and supplies. In almost all cases, the MG Coordinator is county-funded and part of the Extension staff. We are all on the same team!

Here are a few ideas for working more cohesively within your Extension office:

- Get a MG on your county/city the Extension Advisory Council (EAC). A few years ago our state MG strategic planning committee made this a goal. Many EACs now have a MG representative, but some don't. EACs help identify program needs and market and strengthen UME. It's a great group.
- Invite Extension educators from your office (agriculture, 4-H, and nutrition) to your MG monthly meetings to learn what they do and how you may be able to team up on projects. Some of you are already doing this and I commend you for it. (See "Changes for UME" on pg. 4 to learn about new Impact Teams formed to encourage cross-programming within UME.)
- Update your Area Extension Director or County/City Extension Director regularly on MG achievements and programs. Find out how MGs can support big Extension events or lend a hand to support staff when crises arise.

I want to express my deepest gratitude to all of the UME Master Gardeners who put their shoulders and brains behind the many successful MG projects, so valued by our clientele. And finally, a special thanks to our fabulous MG Coordinators who work long hours and use their many talents to keep all of the important balls in the air. Let them know how much you appreciate their leadership and dedication.

### MG Annual Training Day – May 17, 2011

*by Robin Hessey*

The Maryland Master Gardener Thirteenth Annual Training Day will take place this year on Tuesday, May 17, 2011 at UMCP (8am-4:15pm), Stamp Student Union.

This year's event will be a little different:

1. Our event will take place a week or two earlier than in previous years.
2. It's on a Tuesday- a different day of the week.
3. All classes (except for maybe labs) will be in the same building- no need for walking all over campus!
4. More space for the keynote address- no crowding!



As most of you know this is the one MG event you just can't miss- and it only happens once a year. This year we expect it to be more fun than ever.

• The HGIC players will get us all laughing as they regale us with stories from

callers near and far.

- Keynote speaker, Pat Stone, is both inspirational and hilarious. (See story on page 2.)

*Cont'd. on page 2*

**See inside for list of Advanced Training classes, and much more!**

Other great reasons to come:

- Experts in their fields will keep you updated on all of the latest news and techniques. You'll have 30 different workshops to choose from on so many great topics: IPM, native plants, herbal vinegars, propagation, landscaping, vegetables and so much more.
- Your yearly advanced training requirement will be nearly fulfilled.
- Wonderful comraderie. Over 600 MG's will be on hand to celebrate and to meet one another.
- Trade show where vendors cater specifically to MGs: crafts, books, jewelry, seeds, tools, lots of plants and more...
- Great value. For just \$69 you get keynote speaker, 3 workshops, breakfast, lunch, trade show, parking and modern, air conditioned facilities.
- MG Merchandise—pick up or buy shirts, hats, mugs, aprons, vests and more. (Please pre-order any items with your registration form.)

**Be there!** for this special annual MG event! Schedule and registration form will be coming to you in March. Your personal schedule, maps, and meal tickets will be mailed to you early May. □

## Help Needed

### Merchandise Coordinator(s).

We need to train someone now to coordinate MG Merchandise sales for next year. For the last 2 years Casey and Dave Kneipp have most ably coordinated our merchandise sale. They will explain to you their system for taking inventory, bagging and selling the merchandise. You'll have lots of volunteers helping as well. This is a very important job but does not take that much time. Organization and attention to detail is what's important!

### Small Jobs before May 17

1. Help with pre-registration (data entry and check processing at HGIC in Ellicott City in late March though early May).
2. Help with a mailing (about May 3.)
3. Help with merchandise packaging on Thursday, May 12.

### Small Jobs on May 17

Need help with various tasks (will not interfere with your taking classes).

- a. MG merchandise sales, distribution
- b. Registration
- c. Vendor set up
- d. Help set up/monitor breakfast or lunch.

### Post Event Job

We need several folks who would be willing to enter evaluation data into a database. Could be done from your home between May 17 and Jun 15.

**If you can help, call Robin Hessey at 410-531-1754; rmhessey@umd.edu.**

### Room Hosts Needed May 17

If you would like to be a room host who assists speakers, and handles problems, please contact the room host coordinator, Sheryl Freishtat (sheryl@thefreishtats.com) or Ron Anderson (sadicat@verizon.net)—both are Montgomery Co. MGs.

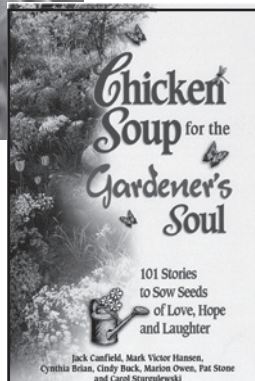
In consideration for your help (you must stay in same room for all 3 workshops), your registration fee is only \$25 and your time is counted as volunteer hours and continuing education hours. □

## Annual Training Day Keynote Speaker: Pat Stone



Often called “The Garrison Keillor of Gardening,” Pat Stone is an exciting, funny, and inspiring gardening speaker and performer - our nation's leading expert on the human side of gardening. He's CoAuthor of *Chicken Soup for the Gardener's Soul*, and Editor/Publisher/Creator of *Greenprints*, “*The Weeder's Digest*,” a magazine devoted to sharing the human side of gardening.

**Keynote Address:** “The Greatest Garden Stories Ever Told”: An enrapturing performance of the most inspiring and heartwarming true garden stories ever told: The Vietnam veteran who couldn't talk to people—until he learned to talk to plants. The little boy who tried to grow . . . doughnuts! The Master Gardener who got a little too carried away. And much, much more... We hope you'll be stirred by this most unique garden talk of all.



Pat will also lead a **workshop on: “The First Rule of Weeding”:** Humor—and instruction—about weeds. This is a totally unique talk that covers both the best ways to deal with weeds in our gardens and WHY there are weeds in our gardens. The remarkable insights in this fascinating, humorous, and utterly surprising presentation will change the way you think about weeding, gardening--and even life! Weeds, it turns out, have an a lot to tell us.

## Grow It Eat It: From Campaign to Program

2010 was the year that the 1-year old Grow It Eat It campaign grew up and matured into a full-blown program. This HGIC-MG partnership is a “signature program” for the UME Food Smart Impact Team. Incredibly, it addresses all of the five main USDA initiatives: Food Security and Hunger, Climate Change, Sustainable Energy, Childhood Obesity, and Food Safety.

Grow It Eat It has increased the value of our MG programs because people are eager for the food gardening knowledge, skill-building, and problem solving for which UME is known. My hat is off to all of the GIEI leaders and other MG volunteers in the state for advancing the mission with creativity and determination in 2010. We had an energetic state-wide planning session in mid-January and it’s clear that we are off to a fast start in 2011:

- Lots of classes and new initiatives being planned around the state.
- Distribution is underway for the 10,000 GIEI promotional seed packets purchased with support from the Food Smart Impact Team.
- Lynn Jacobson, the GIEI webmaster, has been busy updating and adding pages this winter (check out the expanded Youth Gardening section).
- New photo contests are coming along with more regular updates of plant and pest problems.
- New food gardening video clips will be shot and posted.



### 2010 GIEI Stats:

- MGs taught 152 classes to about 4,719 residents.
  - 3,777 gardeners joined the GIEI network- a 110% increase over 2009.
  - GIEI website had 69,881 unique visitors- a 47% increase over 2009.
  - Dozens of GIEI displays and workshops around the state reached tens of thousands of Marylanders.
  - GIEI was a winner of the 2010 Northeast Extension Directors’ Award of Excellence.
- The GIEI blog- over 30,000 page views in 18 months.
- Over 1,000 regular viewers/followers on Twitter and Facebook.
- 28 new YouTube video clips on food gardening topics.
- 180 MGs took GIEI training and food preservation training.
- The GIEI Network News was distributed 16 times to 7,177 gardeners in the network.

### USE HGIC Resources!

- Toll-free number: 1.800.342.2507; Mon.-Fri. 8am-1pm; speak with a Certified Professional Horticulturist.
- Web site: [hgic.umd.edu](http://hgic.umd.edu); dozens of fact sheets, timely tips, Hot Topics, diagnostic web site, and “Send a Question” feature.
- 71 educational videos on everything from snakes, to pruning, to bed bugs, to Starting a School Garden (from HGIC home page, GIEI home page or go to [youtube.com/UMDHGIC](http://youtube.com/UMDHGIC)).
- Sign up to receive HGIC seasonal e-newsletter.
- Follow HGIC and Grow It Eat It on Face book and Twitter.
- Subscribe to the Grow It Eat It Blog posts (from GIEI home page).

### USE MG State Website Resources!

([mastergardener.umd.edu](http://mastergardener.umd.edu))

- Find administrative documents: Volunteer Activity Logs, MG and UME logos; EEO Statements, Policies and Guidelines.
- Volunteer Orientation and Recruitment forms and information.
- MG Handbook ordering information.
- GIEI presentations and forms.
- All county/city basic training training schedule and contact information.
- Gardening topics featuring a booklet called “*Native Plants of MD...What, When, Where*”, and presentations on Composting and Plant and Pest Diagnostics.

### Bloggers Wanted!



Want to share your food gardening experiences and knowledge? The Grow It Eat It blog (<http://www.groweat.blogspot.com>) is looking for new

writers! We particularly need bloggers from the Eastern Shore and Baltimore (but other areas are fine too), and if you are involved with school gardens, community gardens, or demo gardens, or are knowledgeable about container gardening, fruit growing, or “ethnic” crops, we need you too. Contact Erica Smith (Montgomery County MG) at [hedda62@gmail.com](mailto:hedda62@gmail.com).

## Changes for UME

Extension educators and Master Gardeners are sometimes referred to as “change agents”; people who teach others ways to improve individual and community life. Significant changes are now taking place inside UME. These changes began in 2009 and will continue in 2011 to influence all UME units and programs:



- A new staffing plan will be announced any day now that is intended to better align field faculty with the needs of clientele.
- The state has been divided into six program/administrative clusters. For example, the Northern Maryland Cluster is comprised of Carroll, Co., Baltimore Co., Harford Co., and Baltimore City.
- New, multi-disciplinary Impact Teams were created to help UME faculty plan and coordinate programs. For example, the Grow It Eat It program is a signature program of the Food Smart Impact Team (Jon is a core team member). Jon and Robin are members of the Natural Resources Conservation Impact Team that addresses many areas that Master Gardeners work in, such as soil and water protection and IPM.
- Administrative changes—Mary Ellen Waltemire, West Region Director, retired on Dec. 31. She was a strong MG program supporter and will be missed. The Regional Director positions were abolished and Tom Miller, former East Region Director, has taken on a new role as Operations Director for UME.

The MG program is highly regarded by our administrators, campus and field faculty, support staff and clientele. But we can never rest on last year’s successes. We should take advantage of opportunities offered by these big changes to strengthen our MG programs. Tight state and local budgets mean that we must strive to capture the benefits of our work (impacts) whenever possible. Only then can we document our claims that MG programs are cost-effective and essential to the health of our citizens and environment. □

## 2011 International Master Gardener Conference *by Jon Traunfeld*

**October 11-14; Charleston, WV**  
**\$250 - Early Bird regis. by 6/9/2011**  
**\$300 - registration after June 9, 2011**

<http://imgc.ext.wvu.edu/>

We are very lucky that this fabulous bi-annual conference is practically in our backyard this year. Please check out the conference website. The keynote and featured speakers and workshop speakers sound great. I’ll be attending as I’m sure will many of you. It will be an exciting opportunity to learn and network. And what a beautiful time of year to be in Wild, Wonderful, West Virginia!

Robin and I have been asked to help MGs who plan to attend, find out who else is going, who needs a ride, who wants to share a hotel room, etc. If you plan to attend please send Robin the following information by April 15:

- Your name
- Your county and city
- Your phone number and e-mail
- Whether you’d like to give or receive a ride to Charleston and back
- Would like to share a room

We will put your information into an Excel file and e-mail it to the group. You would then know who plans to attend and can make contacts with other MD MGs.

I hope YOU will part of the wave of UME MGs who will be making their way to Charleston, WV this fall!



## Congratulations

- UME in Baltimore County moved into a beautiful new, green building at the Baltimore County Center for Maryland Agriculture at a 149 acre site in Cockeysville, MD.
- Many thanks to Mary Lewis, Baltimore City MG, for another great job of organizing our multi-county MG presence at State Fair and the Maryland Home and Garden Show. These are important and large public events that require a lot of coordination, attention to detail, and hard work.
- \* The Grow It Eat It program won the 2009 Northeast Extension Directors Award for Excellence (award made in June, 2010). Many thanks to Dr. Nick Place, UME’s Associate Dean and Director, for nominating this relatively new program. We received a plaque and a \$1,000 award that was used to purchase GIEI promotional seed packets for 2011

## Comings & Goings

- Welcome aboard to Andy Lazur, Professor and Extension Specialist with the UME Sea Grant Program, who has taken a new position as Program Leader, Ag & Natural Resources Programs. He has a deep appreciation for our outreach teaching and successful projects around the state.
- And a big MG pat on the back to Justin Hunt, now serving as the MG Coordinator for Garrett Co. Justin will have his first basic training course this spring.
- The Cecil Co. MG program was re-charged in 2010 with the hiring of Doris Behnke, the Faculty Extension Assistant for Agriculture and Horticulture. Doris is running a basic training course this spring.
- We wish Susan Williamson the best of luck in her new job. Susan is a Carroll Co. MG who was hired as the first paid MG Coordinator for the Baltimore Co. Susan did a magnificent job of leading this rapidly growing program, and we are sorry to see her go.

# 2010 MG Highlights

Submitted by MG Coordinators

## Anne Arundel Co.

MGs answered the questions and solved the problems of 3,228 residents who visited three Ask a Master Gardener plant clinics that were held 78 times.

## Baltimore Co.

The Grow It Eat It committee was very active and is working with Kaiser Permanente to start a community garden adjacent to one of their buildings. The Bay-Wise committee certified 25 yards and completed a joint project with the Gunpowder Valley Conservancy to help restore the Jennifer Branch watershed.

## Baltimore City

Developed more hands-on training for their MGs with classes on hoop house management and a mini-certification on pruning.

## Charles Co.

MGs taught a spring and fall session of horticulture classes to the inmates at the Charles County Detention Center which included planning and executing a Healing Garden, as well as a Vegetable Garden, on the Detention Center grounds. This gave our volunteers an opportunity to share the MG Grow It Eat It education.

## Dorchester Co.

Graduated their second class of 13 interns. All interns accumulated 40+ volunteer hours in just nine months!

## Frederick Co.

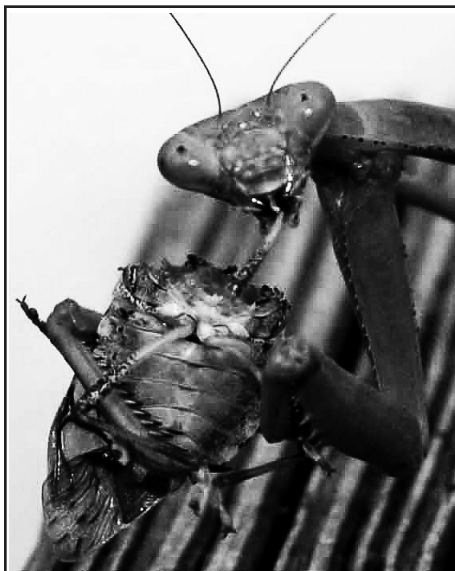
UME offices are temporary moving to the Public Safety Training Facility in Frederick. Even though our move won't be until February or March, we will be holding our meetings there starting in January. The address is: 5370 Public Safety Place, Frederick, Maryland. It used to be: 8349 Reich's Ford Road, Frederick, Maryland 21704 if you are using a GPS or on-line mapping service.

## Harford Co.

Created a new core group of MG's for teaching youth programs. Two MG's have taken Growing Healthy Habits (GHH) training sponsored by UME's Food Supplement Nutrition Education program and have used the GHH curriculum to teach at Title1 Schools and summer camp.

## Howard Co.

MGs designed and installed a large rain garden at the county landfill with funding from the Howard Co. Bureau of Environmental Services. Volunteers and staff are working with UME to do follow-up surveys on rain garden visitors and those clients who received 143 free rain barrels and 87 compost bins.



**Praying Mantis devouring a Stink Bug!!**

Photo by Susan Levi-Goerlich,  
Howard Co. MG

## Kent Co.

Sabine Harvey, Program Asst. with UME, Kent Co. and a Queen Anne's Co. MG, started a new veggie garden at a middle school. 418 lbs. of food was harvested with 250 lbs. donated to a food pantry.

## Lower Eastern Shore

MGs in Worcester Co. teamed up with Grow Berlin Green to create a vegetable garden at the Berlin Library. The food was donated to a local charity and the garden was a wonderful success with evening classes. That led to a desire for the local elementary school to partner with us to start a sensory garden, a butterfly garden, and a vegetable garden.

## Prince George's Co.

MGs certified the Andrews Air Force Base Welcome Center as Bay-Wise. This is a pilot project that may be initiated on Air Force Bases around the country!

## St Mary's Co.

MGs made great strides in raising UME visibility through projects that received media coverage. They held 34 Ask a MG plant clinics at the 3 local libraries and heard repeatedly that folks came to the libraries specifically to talk to us and to ask us questions.

## Talbot Co.

MGs are partners with Talbot Co. Public Works on a large Tred Avon Watershed Grant project. UME was awarded \$133,180 from the State of Maryland Chesapeake Bay Restoration to reduce non-point pollution in the watershed from Nov. 2011-June 2012.

MGs will focus on Bay-Wise education and outreach, and demonstration projects for the watershed residents.

## Washington Co.

Over \$20,000 in grant funds supported the purchase of a greenhouse for one of our teaching gardens and renovations at our therapeutic gardens at a long-term care hospital.

## Date reminders:

- Maryland Day at University of Maryland, College Park campus- Sat., April 30
- MG Advanced Training Day at University of Maryland, College Park campus- Tue., May 17
- Open House at the Central MD Research and Education Center/ Clarksville- Sat., Oct. 1
- 2011 International MG Conference, Morgantown, WV- Oct. 11-14

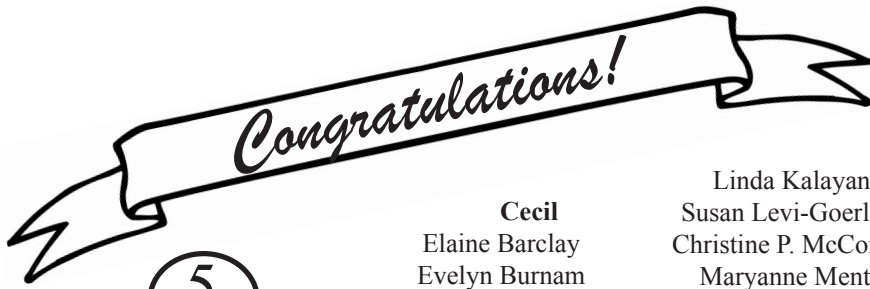
## Master Gardener State Newsletter

Circulation: approx. 2,200

Written by  
Jon Traunfeld and Robin Hessey  
Formatting and Layout by  
Robin Hessey

# Thank you, MG's, for Your Years of Dedicated Service *by Robin Hessey*

Congratulations and a sincere thank you to all MG's who have achieved an anniversary milestone in the MG program in 2010. You are the ones that really provide the continuity, expertise, and glue that hold the entire program together. We are pleased that we have so many MGs to recognize for their 5, 10, 15th and 20+ anniversaries. This year we have a record number of ten MGs with over 20 years of active service.



## 5 years Class of 2005

### Anne Arundel

Marilyn Bandy  
Jane Chouinard  
Scott Doran  
Carol Dowling  
Judy Graham  
Lillie Harrison  
Paul Keck  
Linda Kolosky  
Linda Martinich  
Jeanne Paglee  
Valerie Pawlewicz  
Candicé Rockwood  
Lisa Winters

### Baltimore City

Cynthia Chideya  
Charleye Dyer  
Shari Edelson  
Janet Gross  
Beverly Miranto  
Louise Teubner-Rhodes  
Ellen Tiano  
Robert Tiano

### Calvert Co.

Anita Bruno  
Margaret (Peg) Dann  
Carla Porter

### Carroll

Kelly Bollinger  
Sheila Bowman  
Jane Slade  
La Verne Sokolowski  
Jane Thayer  
Maryanne Turner  
Bob Wall

### Cecil

Elaine Barclay  
Evelyn Burnam  
George Esry  
Joanna Esry  
Kathy Figgs  
Skippy McBride  
Jane McKown  
Heather Morrissey

### Charles

Robert M. Eppley  
Mary G. Gaskins  
Karen D. Lefever  
Lois C. Manning  
Madelene Weinberger

### Frederick

Alma Boyer  
Kathleen Chaney  
Audrey Cooke  
Bethany Dellagnello  
Earlene Duncan  
Tony Murdock  
Sherry Rodeheaver  
Avonell Watson

### Harford

Linda Baker  
Mary Bowen  
Gerry Bullis  
Mary Carol DiPaula  
Carol Hooper  
Beth Ireland-Brady  
Suzanne Kracke  
Marlene Lynch  
Susan McCue  
Ted Moran  
Joy Wilhelm  
Kim Williams

### Howard

Edwin H. Blacka  
Linda Branagan  
Carroll Caverly  
Robert Emanuel  
Beverly Hebron

Linda Kalayan  
Susan Levi-Goerlich  
Christine P. McComas  
Maryanne Mento  
Mary A. Twamley

### Montgomery

Ronald Anderson  
Jeanne Atzert  
Leslie Beal Bloom  
Marlene Cianci  
Royce Denham  
Serena Fossi  
Kathleen Franklin  
Sheryl Freishtat  
Elizabeth Hiner  
Cathy Hirsh  
Julia Horman  
Dolores Lertora  
Barbara Lewis  
Irene McDonald  
Mitsuko Otani  
Sheila Quigley  
Andrea Schooley  
Monique Shimm  
Bertha Sullivan  
Mike Welsh  
Nancy Woods

### Prince George's

Irene Jewett

### Washington

Gordon Bartels  
Janet Bartels  
Karen Greeley  
Barbara Henderson  
Brenda Hollar  
Judith Kofoet  
Maureen Kops  
Ruthanne Mills  
Karen Wilson

### Lower Eastern Shore

Ellen Walston



## 10 Years Class of 2000

### Anne Arundel

John Conners  
Barbara K. Jett  
Diane Scherer

### Frederick

Patricia Cowperthwaite  
Donna Darr  
Betsy Devilbiss  
Phyllis Heurman  
Bunny LaDouceur  
Elyse Phillips

### Harford

Mary Crisco  
Jenny M. Ramos-  
Peterson  
August Reichert

### Howard

Mary Pat Ferensic  
Robin Hessey  
Andrea Phillips  
Mary Streb

### Montgomery

Nelson Bortz  
Ruth Bortz  
Marney Bruce  
Carolyn Burelbach  
Bev Carragher  
Audrey Engstrom  
Leonard Friedman  
John Gelb  
Joyce Lewis  
Masoud Norouzi  
Shirley Purdy  
Margie Richards  
Linda Waters  
Alyce Wertheimer

### Queen Anne's

Lois Noonan

### Talbot

Susan Check-Landis  
Barbara Suman



## 15 Years Class of 1995

### Anne Arundel

Lew Shell

### Carroll

Barbara Childs

### Howard

Donna White  
Gordon Bishop

### Montgomery

Carol Carrier  
Alberta Magzanian  
Penelope McCrea  
Sue Smith  
Janet Tingley



## 20 or More Years

### Baltimore City

Al Degray  
20 Years- 1990  
Larry Kloze  
20 Years - 1990  
Ed Lindeman  
26 Years - 1984  
Mary DeGray  
27 Years -1983  
Elizabeth Stran  
28 Years -1982

### Dorchester

Joanna Tilghman  
21 Years - 1989

### Howard

Barbara Sieg  
25 Years - 1985

### Montgomery

Arlene Cole  
21 Years - 1989  
Sylvia Robinson  
26 Years - 1984

### St. Mary's

Suzanne Patterson  
20 Years - 1990

## MG Advanced Training

by Robin Hessey

Your MG training does not end with basic training—it just begins there. It's essential (and fun) to continue your education in as many ways as you can. Many courses are "stand-alone", others can be grouped to obtain an advanced certificate.

### MG Advanced Level II Certifications Awarded

The following MGs have completed classwork, homework and community service to achieve their Certifications in 2010. Congratulations!!

#### Woody Plants Certificate

Linda Decker - Howard Co.  
Martha Fisher - Montgomery Co.  
Janet Gross - Baltimore City  
Pat Harrington- Howard Co.  
Paula Jean Knepper- Montgomery Co.

#### Plant Diagnostics Certificate

Nicolas Tardif - Prince George's Co.

#### Master Composter Certificate

Julia Cubit - Frederick Co.  
Pam Dennison - Anne Arundel Co.  
Tenley Erickson- Prince George's Co.  
Betsy Grater - Howard Co.  
Jayne Hayes - Howard Co.  
Norma Imersheim - Howard Co.  
John Ittu - Queen Anne's Co.  
Jane Keller - Montgomery Co.  
Susan Levi-Goerlich - Howard Co.  
Mary Jo Ludvigson - Calvert Co.  
Denise Moroney - Calvert Co.  
Carole Purcell - Calvert Co.  
Betty Rice - Howard Co.  
Lisa A. Smith - Baltimore  
Jill Wrigley- Baltimore City

### How to Get Advanced Certification

#### Woody Plants

You will need to take 5 courses: Plant ID/Taxonomy and all of the 200 Common Landscape courses: Shade Trees; Ornamental Trees and Vines; Flowering Shrubs; Evergreen Trees and Shrubs

#### Plant Diagnostics

You will need to take 4 courses: Plant Diseases, Entomology, "Ask a MG" Practicum, and Plant ID/Taxonomy.

#### Master Composter

Requires class attendance, project completion and 10 hours of volunteer work.

## March and April MG Advanced Training Classes

### MASTER COMPOSTER

Thursdays March 17 and March 24; 9:30am-3:30pm

Baltimore Co. Extension, Hunt Valley

Instructors: Lew Shell, Horticulture Consultant, HGIC and Anne Arundel Co. MG;  
Susan Levi-Goerlich, Howard Co. MG

Registration Fee: \$45 plus required and optional texts; Registration Deadline: 3/10

Learn all about composting from dedicated Master Gardener Composters. This advanced course, designed to teach the teacher, will not only enable you to improve your own composting techniques, it will empower you to share your knowledge with novices and experts alike. You will be given instruction in both the science and the art of creating compost and be given the opportunity to hone your own personal teaching skills. Class participants are expected to give 10 hours of volunteer time in the next 12 months in the area of compost education in order to receive Master Composter certification.

Field work: Designing a compost demo area at the Ag Center; Field Trip to Eastern Sanitary Landfill

### GROWING FRUIT AT HOME

Wednesday, March 30, 9am-3pm

University of Maryland Research and Education Center,  
Upper Marlboro- PRINCE GEORGE'S Co.

Instructors: Christopher Walsh, Ph.D., Professor of Horticulture, UMCP;  
R. David Myers, Ext. Educator - Fruits and Vege., and Anne Arundel Co. Ext. Director.  
Registration Fee: \$35; Reg. Deadline: 3/23; Class size limit: 20

Brand new course! Let's Grow It and Eat It with Fruit - fruit is fun, nutritious, and often easy to grow in Maryland. Grapes, blueberries, raspberries, apples, peaches and more. Learn what the most successful fruit plants are in Maryland and how to grow them—even in small urban spaces. Blueberry and apple pruning demos, and a field walk included. Walking and standing will be required for field trip.

### SCHOOL GARDENS - LIVING EDUCATIONAL SPACES

Saturday, April 9, 9am-3pm

Great Kids Farm, Catonsville- BALTIMORE County

Instructors: Greg Strella, Farm Manager, and the staff at Great Kids Farm  
Jon Traunfeld, Extension Specialist in Fruits and Vegetables and State MG Coordinator  
Registration Fee: \$30; Reg. Deadline: April 1, 2011; Class size: 20 MGs

School gardens are hot right now- but what do MGs need to know to successfully help implement these living educational spaces? Everyone wants a school garden, but how do you set them up, sustain them, and make them truly educational? This special workshop was developed by Great Kids Farm for, and is open to, both Master Gardeners and Baltimore City Public School teachers.

You'll learn some of the best ways to develop Living Educational Spaces as we explore the range of possibilities and lay out the process of starting from scratch; we'll also take a walking tour to discuss how spaces begin and develop. Also:

- workshops on how to work with and engage students
- pests and diseases (and how they present great learning opportunities)
- indoor and container gardening
- lots of schoolyard ideas from touring an exhibition garden
- hear from teachers what their needs are
- overview of how MGs can support living educational spaces in schools
- success stories

## SUMMARY - State MG Advanced Training for Spring & Summer 2011

Take a look at all of the good ways you can deepen your knowledge about some very important topics with in-depth, single day or multi-day trainings around single topics. Below is a summary of classes. We hope that you will take advantage of as many of these offerings as you can. All of these classes count towards your 10-hour continuing education requirement.

**Any MG or MG intern is welcome to take any class offered. TO REGISTER - SEE PAGE 11.**

Course name	Location	Time	Presenter	Registration fee & deadline
Master Composter	Baltimore Co. Ext. (Hunt Valley)	Thurs. 3/17 & 3/24 9:30am-3:30pm	Lew Shell; Susan Levi-Goerlich	\$45 & textbooks Reg. Deadline: 3/10
Growing Fruit at Home	Upper Marlboro	Wed. 3/30; 9am-3pm	Christopher Walsh, Ph.D; R. David Myers	\$35 Reg. Deadline: 3/23
School Gardens	Great Kids Farm (Catonsville)	Sat. 4/9; 9am-3pm	Great Kids Farm Staff Jon Traunfeld	\$30 Reg Deadline: 4/1
Landscape Design for Water Management	Howard Co. Ext. (Ellicott City)	Weds. 6/1, 6/8, 6/15 9:30am-3:30pm	Jack Leonard; Howard Co. Gov.	\$49 Reg. Deadline 5/25
Landscape Hort: Shade Trees	Charlotte Hall Library	Thurs. 6/2; 6/9; 6/16 10am-1pm	Bob Stewart	\$45 Reg. Deadline: 5/26
Landscape Hort.: Evergreen Trees and Shrubs	Wye REC, QA Co. Wye Nursery Atkins Arboretum	Mon. 6/6; Tu 6/7; Th 6/9; 9:30am-12:30pm	Steve Dubik	\$45 Reg. Deadline: 5/27
Ask a MG Practicum	Harford Co. Ext. (Forest Hill) & 2 field trip sites	Tues. 6/14, Th 6/16; Tues. 6/21; 10am-2pm	Dave Clement, Ph.D, Mary Kay Malinoski Joe Marsala Bonnie Pavlak	\$45 (optional book - \$25) Reg. Deadline: 6/7
MG ANNUAL TRAINING DAY	U. of MD (College Park)	Tues. May 17, 2011 8:00 am-4:15pm.	Over 30 different presenters	\$69; Registration opens in March
Salad Tables/Salad Boxes	Allegany Co. Ext. (Cumberland)	Wed. 6/15 9am-11:30am	Jon Traunfeld	\$25 Reg. Deadline: 6/8
Plant ID/Taxonomy	Montgomery Co. Ext. (Derwood)	Mon. 5/23; Tues 5/24; Th. 5/26; 9:30am-12:30	Steve Dubik	\$35 (plus book) Reg. Deadline: 5/16
	Fred. Co. Public Tr. Facility (Frederick)	Tues. 6/21, 6/28; 7/12 9:30am-12:30pm	Wanda MacLachlan	\$35 (plus book) Reg Deadline: 6/14
	Cyburn Arboretum (Baltimore City)	Wed. 6/22, 6/29, 7/6 6pm-9pm	Wanda MacLachlan	\$35 (plus book) Reg Deadline: 6/15
	Charlotte Hall Library (St. Mary's Co.)	Thurs. 7/14, 7/21, 8/4; 9:30am-12:30pm	Wanda MacLachlan	\$35 (plus book) Reg Deadline: 7/7
Entomology- Getting Intimate with YourFoe	Sotterley Plantation (St. Mary's Co.)	Thurs. 6/23; 9:30am-3:30pm	Mike Raupp, Ph.D.	\$35 Reg. Deadline: 6/16
Vegetable Plant and Pest Diagnostic Walks	Kinder Farm Park (Anne Arundel Co.)	Thurs. 7/14; 7-9pm	Jon Traunfeld	\$10; Reg. Deadline 7/7
	Washington Co.	Tues. 7/12; 8:30-10:30am		\$10; Reg. Deadline 7/5
	Button Farm - Mont.Co	Wed. 7/13; 9-11:00am		\$10; Reg Deadline 7/6
	Charles Co. Detention Ctr.	Tues. 7/26; 9-11:00am		\$10; Reg. Deadline 7/19
Plant Diseases	Carroll Co. Ext. (Westminster)	Wed. 9/7; 9:30am-3:30pm	Dave Clement, Ph.D	\$35; Reg. Deadline: 8/31

### VEGETABLE PLANT AND PEST DIAGNOSTIC WALKS

#### 4 Field Walk Locations, July

(See above for locations, dates, times, fees and registration deadlines)

Instructor: Jon Traunfeld, State MG Coordinator; Extension Specialist, Fruits and Vegetables

Let's go see what's happening in the vegetable garden. We'll be looking for and identifying summer pests, diseases and abiotic problems, then proceed to a discussion of prevention, deterrence and cures. A great fun way to learn.

## LANDSCAPE DESIGN FOR WATER MANAGEMENT - June 2011

### Wednesdays June 1, June 8, June 15 - 9:30am-3:30pm Howard County Extension

Primary presenter: Jack Leonard, Principal of JGL Design Associates; Adjunct Professor at University of Maryland  
Other presenters: Sylvia Huestis, Howard Co. MG; Mark Richmond, Storm Water Management, Howard Co.; Susan Overstreet, Dept of Planning and Zoning; Amanda Rockler, Water Restoration Specialist; Brian England, Columbia Asso. Watershed Advisory Comm.  
Reg. Fee: \$49; Reg. Deadline: 5/25; To Register, see page 11.

Does water flow off your property quickly? Does it pool in the wrong spots? What can and should be done? Excess water flow is also creating critical environmental problems. Erosion, pollution, and run off are destroying water quality and native habitat. Since a great percentage of the problem is caused by run-off from private property, Master Gardeners are in the perfect position to help. In this course you'll:

- Learn to design your landscape so that it manages water in the best possible way: good design decisions include resource protections, microclimates, amount and type of hardscapes, material selections, maintenance requirements and best management practices (best design principles) for water management.
- Learn in-depth about and take field trips to both rain-gardens and riparian buffers.
- Understand the scale of the problem from Howard Co. Government officials
- Understand the Master Garden's important role

This is a new course developed by the state MG Environmental Horticulture committee, the Howard Co. MGs and our presenter, Jack Leonard, RLA, Principal, JGL Design Associates. It will become part of a new native plants certificate program which will also include ecology and native plants/pollinators.

## ASK A MG "PRACTICUM"

### June 14, 16, 21 - 10am-2pm Harford Co. Extension

Instructors: Dave Clement, Ph.D., Regional Specialist, Plant Pathology; Mary Kay Malinoski- Regional Specialist, Entomology; Joe Marsala, Anne Arundel Co. MG; and Bonnie Pavlak, Anne Arundel Co. MG  
Registration Fee: \$45; Registration Deadline: June 7; See Registration form on p. 11.

We would all like to be able to better answer questions at our "Ask a Master Gardener" events. Some of us don't even sign up to help out at these events because we feel like we don't know enough. Now's your chance to learn more, hone your diagnostic skills and feel comfortable with your abilities and with the public.

Optional Text: *Weeds of the Northeast* by Uva, Neal, & Detomaso (\$25) (for day 3)

Day 1	Tues. June 14; 10am - 2pm	Harford Co. Extension	Introduction to entomology diagnostics and disease diagnostics; abiotic; factors; top 10 pests and diseases Field Trip to Baker home	Dave Clement Mary Kay Malinoski
Day 2	Thurs. June 16; 10am - 2pm	Harford Co. Extension	Mock Plant Clinic Field Trip to Cone home	Dave Clement Mary Kay Malinoski
Day 3	Tues. June 21; 10am - 2pm	Harford Co. Extension	Weeds, vegetables; dealing with the public; practice exercises	Joe Marsala Bonnie Pavlak

## SALAD TABLES; SALAD BOXES

### June 15, 9-11:30am Allegany Co. Extension

Instructor: Jon Traunfeld, Extension Specialist, Fruits and Vegetables and State MG Coordinator  
Registration Fee: \$25; Registration Deadline: 6/8

SALAD TABLES, SALAD BOXES - Grow vegetables and greens anywhere! Many Marylanders are pressed for time and adequate garden space. Others have limited abilities, too much shade or awful soils. Yet, most of us are excited about the prospect of fresh, nutritious veggies growing right outside our back door. In this workshop we will build 2 salad tables and then watch Jon demonstrate how to build a salad box. Complete written instructions will be given so that you can replicate these containers at schools, hospitals or anywhere.

## PLANT ID/TAXONOMY

Locations: **Montgomery Co.** - Mon. 5/23; Tues 5/24; Th. 5/26 ; 9:30am-12:30pm; Mont. Co. Ext. (Derwood) Regis. Deadline: 5/16  
**Frederick Co.** - Tuesdays 6/21; 6/28, 7/12; 9:30am-12:30pm; Public Safety Tr. Facility (Frederick); Regis. Deadline: 6/14  
**Baltimore City.** - Wednesdays. 6/22, 6/29, 7/6; 6-9pm; Cylburn Arboretum (Baltimore); Regis. Deadline: 6/15  
**St. Mary's Co.** - Thursdays 7/14, 7/21; 8/4; 9:30am-12:30pm; Charlotte Hall Library; Reg. Deadline: 7/7

Instructors: Steve Dubik, Horticultural Consultant, UME, Montgomery Co. (Montgomery Co. class)  
Wanda MacLachlan, Extension Environmental Educator (Fred. Balto, St. Mary's classes) .

Required Text: A *Field Guide to Trees & Shrubs* (Peterson Field Guide) by George A. Petrides (\$16). Registration Fee: \$35

This course is a very important basic tool for Master Gardeners in that it teaches all of the basics needed to identify woody plants in the landscape. Being able to identify plants is the first step in knowing how to diagnose problems or give growing advice. Whether you want to learn 200 plants, 20 plants, or just want to learn techniques to identify plants in the field, this is the course for you. The course will be made up of approximately 9 hours of class work with lots of hands-on practice with dichotomous keys. You will also receive a specially prepared booklet of course materials.

## ENTOMOLOGY- GETTING INTIMATE WITH YOUR FOE

**Thursday, June 23, 2011, 9:30am-3:30pm**

**Sotterley Mansion - Hollywood, St. Mary's County**

Presenter: Mike Raupp, Ph.D., Professor and Extension Specialist, Entomology, University of Maryland  
Reg. Fee: \$35; Reg. Deadline: Thurs., June 16, 2011 - To Register, see page 11.

Spend the entire fascinating day with Dr. Mike Raupp getting intimate with your foe! Ever get nasty insect pests on your ornamental plants and wonder how to control them in the most environmentally responsible manner? Join us to learn about common pests, how they affect your garden and operate in the ecosystem, and how to control them.

Dr. Mike Raupp is an excellent presenter. He will fascinate us with information from the world of bugs, hands-on exercises, practical solutions to our pest problems and entertaining presentations. He'll also teach us the importance of creating sustainable landscape systems with minimal dependence on synthetic pesticides through the conservation and enhancement of biological diversity, with special emphasis on natural enemy communities (IPM).

## LANDSCAPE HORTICULTURE: 200 COMMON LANDSCAPE PLANTS

Learn all about the woody plants (approximately 200) that we usually see in the landscape - both native and non-native. These classes will combine lectures with hands-on activities in which you will learn to identify, understand the cultural requirements of, and select the very best plants for Maryland landscapes. Take just one section or all 4 sections. See web ([mastergardener.umd.edu](http://mastergardener.umd.edu)) for complete course description). Each student will receive a copy of *Common Maryland Landscape Plants*, a practical guide to selecting woody plants for Maryland gardens. Suggested Reference: Michael Dirr's *Manual of Woody Landscape Plants: Their Identification, Ornamental Characteristics*.

**SHADE TREES - ST. MARY'S CO.** - Thursdays 6/2, 6/9; 6/16; 10am-1pm, Charlotte Hall Library; Tuition: \$45, Reg. Deadline: 5/26  
Presenter: Bob Stewart, UME, Retired.

**EVERGREEN TREES & SHRUBS - QUEEN ANNE'S CO.** Mon 6/6; Tues 6/7; Th. 6/9; 9:30am-12:30 pm; Wye Research and Education Center and two field trips on 6/9 to Wye Nursery and Adkins Arboretum.

Presenter: Steve Dubik, Mont. Co. MG Coordinator; Instructor, Montgomery College; Tuition: \$45.; Registration Deadline: 5/31

## PLANT DISEASES

**Wednesday, Sept. 7, 2011, 9:30 am-3:30pm**

**Carroll Co. Extension, Westminster**

Presenter: Dave Clement, Ph.D., Extension Specialist in Plant Pathology  
Reg. Fee: \$35; Reg. Deadline: Wed. 8/31 - To Register, see page 11.

Plant diseases often seem like exotic mysteries left up to the experts to solve. Well, guess what- we MG's can now begin to unravel some of these mysteries ourselves. In this course you'll learn all about the bacteria, fungi and viruses that cause plant problems. You'll also learn about their symptoms, cycles and controls. In addition to the lecture and handouts you will get hands-on training using both samples and field walk. We hope that you'll feel comfortable enough with the basics of plant diseases to be able and to recognize problems in your own gardens and to use the information to competently help clients at plant clinics. This class counts as your Plant Disease requirement for your Plant Diagnostics certificate.

## REGISTRATION FORM - Spring/Summer 2011

Date: \_\_\_\_\_ MG County: \_\_\_\_\_ Phone: \_\_\_\_\_ Email: \_\_\_\_\_

Name: \_\_\_\_\_ Address: \_\_\_\_\_

City: \_\_\_\_\_ State: \_\_\_\_\_ Zipcode: \_\_\_\_\_

Please mail in your completed form with checks made **payable to the University of Maryland**. Please include your tuition and payment for any of the course books you'd like us to order. If you don't already have these texts you can purchase them on your own, or, for your convenience, you can order them from us. We will deliver them to you the first day of class. Please fill in and return your application to: MG Classes, HGIC, 12005 Homewood Rd. Ellicott City, MD 21042.

Course Title	Item	Cost	Check	Am't Enclosed
Master Composter	Tuition (Baltimore Co.) (includes handbook)	\$45	<input type="checkbox"/>	_____
	Required Text: NRAES' 50 page booklet <i>Composting to Reduce the Waste Stream</i>	\$10	<input type="checkbox"/>	_____
	Optional Texts: <i>Rodale Guide to Composting</i> by Grace Gershuny, Deborah L. Martin (\$13) (highly recommended)	\$13	<input type="checkbox"/>	_____
	<i>Worms Eat My Garbage</i> by Mary Appelhof (\$12) (great, but optional)	\$12	<input type="checkbox"/>	_____
Growing Fruit at Home	Tuition (Upper Marlboro - PG Co.)	\$35	<input type="checkbox"/>	_____
School Gardens	Tuition (Great Kids Farm - Baltimore Co.)	\$30	<input type="checkbox"/>	_____
Landscape Design for Water Management	Tuition (Howard Co.)	\$49	<input type="checkbox"/>	_____
Landscape Horticulture	SHADE TREES- St. Mary's Co.	\$45	<input type="checkbox"/>	_____
	EVERGREEN TREES AND SHRUBS- Queen Anne's Co.	\$45	<input type="checkbox"/>	_____
Ask a MG Practicum	Tuition (Queen Anne's. Co.)	\$45	<input type="checkbox"/>	_____
	Optional Text: <i>Weeds of the Northeast</i> by Uva, Neal, & Detomaso	\$25	<input type="checkbox"/>	_____
Salad Tables/Boxes	Tuition & Supplies (Allegany Co.)	\$25	<input type="checkbox"/>	_____
Plant ID/Taxonomy	Tuition Indicate location: <input type="checkbox"/> Mont. <input type="checkbox"/> Fred. <input type="checkbox"/> Balto. <input type="checkbox"/> St. M.	\$35	<input type="checkbox"/>	_____
	Required Test: <i>A Field Guide to Trees &amp; Shrubs</i> (Peterson Field Guide) by George A. Petrides	\$16	<input type="checkbox"/>	_____
Entomology—Getting Intimate with Your Foe	Tuition (St. Mary's Co.)	\$35	<input type="checkbox"/>	_____
Vegetable (GIEI) Plant /Pest Diagnostic Walks	Tuition. Indicate location: <input type="checkbox"/> Anne Arundel <input type="checkbox"/> Washington <input type="checkbox"/> Montgomery <input type="checkbox"/> Charles	\$10	<input type="checkbox"/>	_____
Plant Diseases	Tuition (Carroll Co.)	\$35	<input type="checkbox"/>	_____
Total Enclosed				_____

If you prefer to pay by credit card, please fill in below. You can then mail or fax (410-531-5567) the form:

Credit card company: Visa MC Discover Your name (as it appears on card): \_\_\_\_\_

Number on card: \_\_\_\_\_ Expiration Date: \_\_\_\_\_

Home and Garden Information Center  
 University of Maryland Extension  
 12005 Homewood Rd.  
 Ellicott City MD 21042

Non-Profit Org.  
 U.S. Postage  
 PAID  
 College Park, MD  
 Permit No. 10

**Master Gardener Annual Training Day**  
 Tuesday, May 17, 2011  
 Univ. of MD College Park; 8am-4:15pm  
**SAVE THE DATE!**

University of Maryland Extension programs are open to all citizens without regard to race, color, gender, disability, religion, age, sexual orientation, marital or parental status, or national origin.

- Look inside for:**
- Jon's Greeting
  - MG Annual Training Day
  - GIEI Update
  - HGIC and MG Website Resources
  - Changes for UME
  - International MG Conf.
  - 2010 MG Highlights
  - Congratulations 5, 10, 15 & 20+ yrs
- State Advanced Training
  - Master Composter
  - Growing Fruit at Home
  - School Gardens- Living Educational Spaces
  - Landscape Design for Water Management
  - "Ask a MG" Practicum
  - Salad Tables/Salad Boxes
  - Landscape Horticulture—200 Plants
  - Plant ID/Taxonomy
  - Entomology—Getting Intimate with Your Foe
  - Vegetable Plant/Pest Diagnostic Walks
  - Plant Diseases

**Master Gardener State Newsletter**  
 A Newsletter for Master Gardener Volunteers from the State Master Gardener Office  
 February, 2011



UNIVERSITY OF  
 MARYLAND  
 EXTENSION  
*Solutions in your community*